



collaborative.org

Collaborative for Educational Services

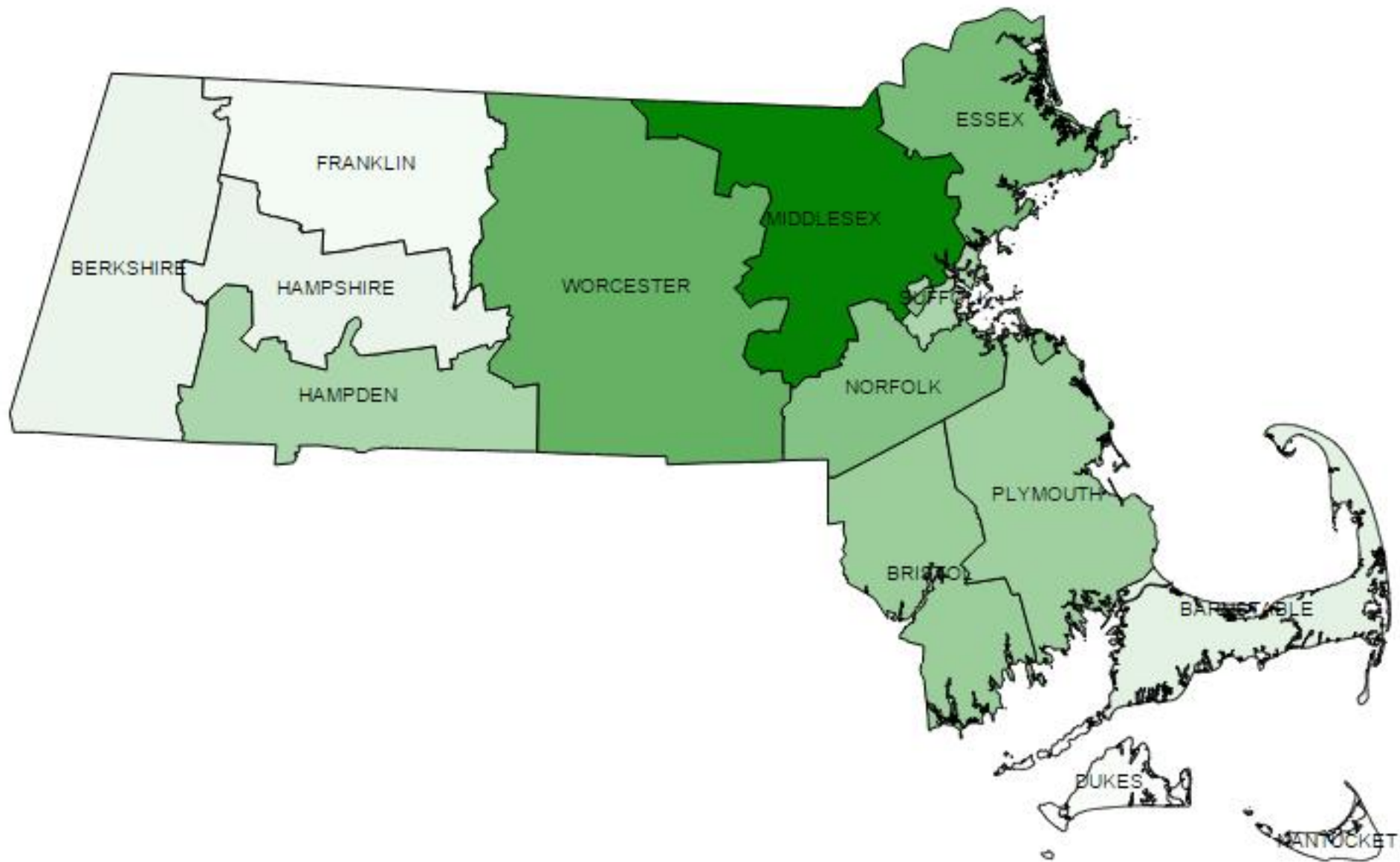
Public School Enrollment, Population Trends, and School Alternatives

(home and private schooling, charter schools, school choice)

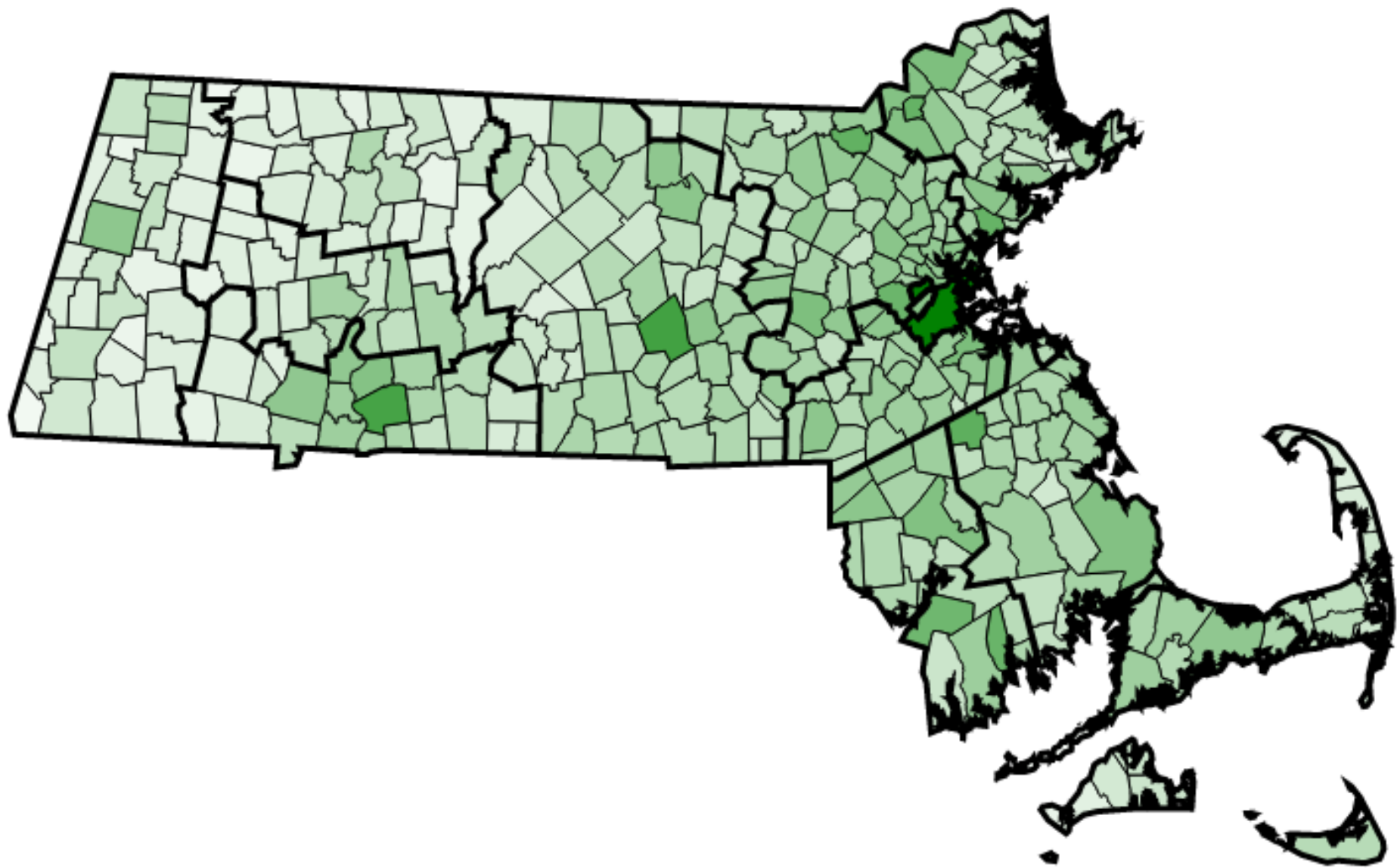
In Franklin and Hampshire Counties

September, 2015

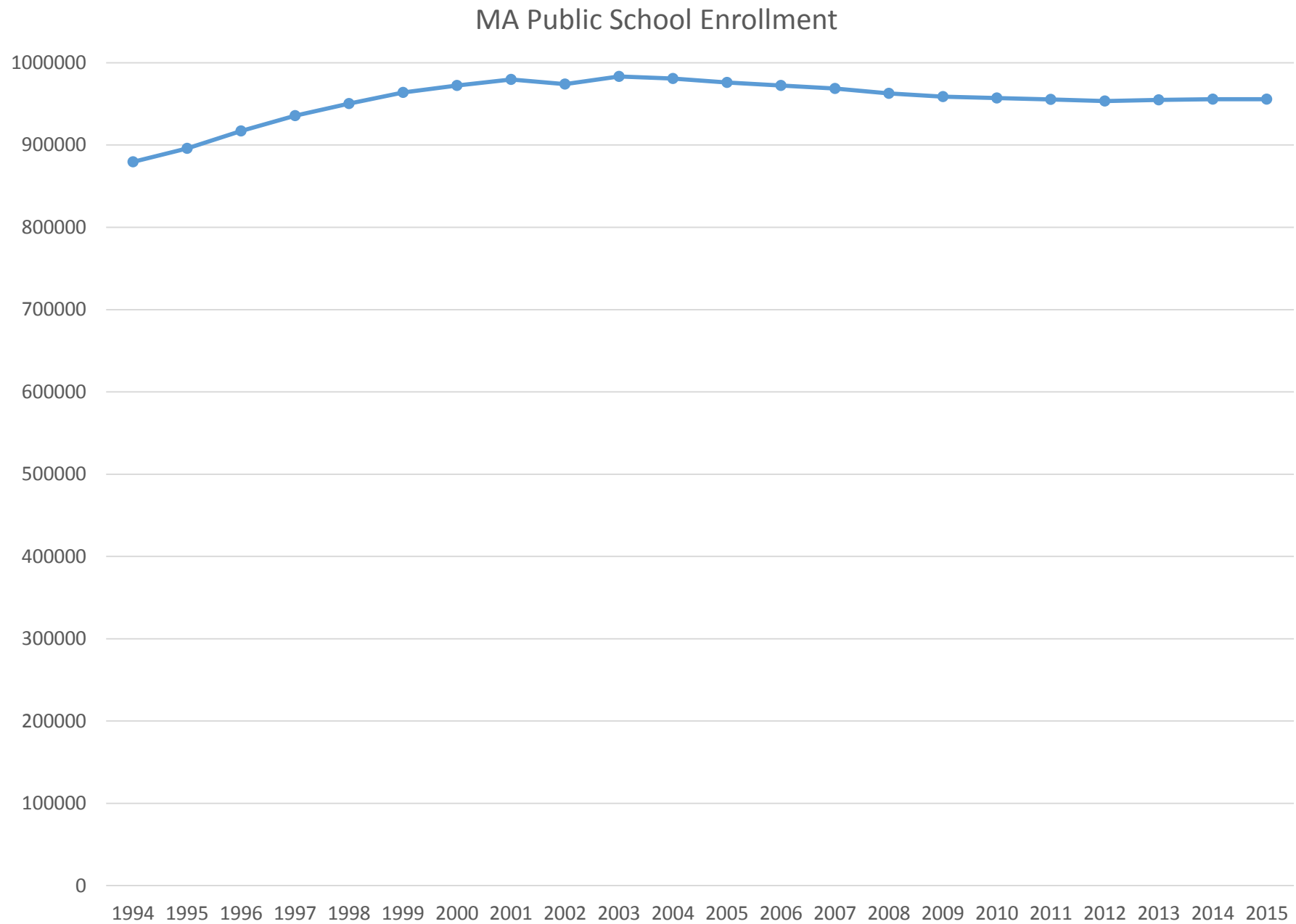
Note: Read brief interpretive comments in the slide notes for some of the following slides.



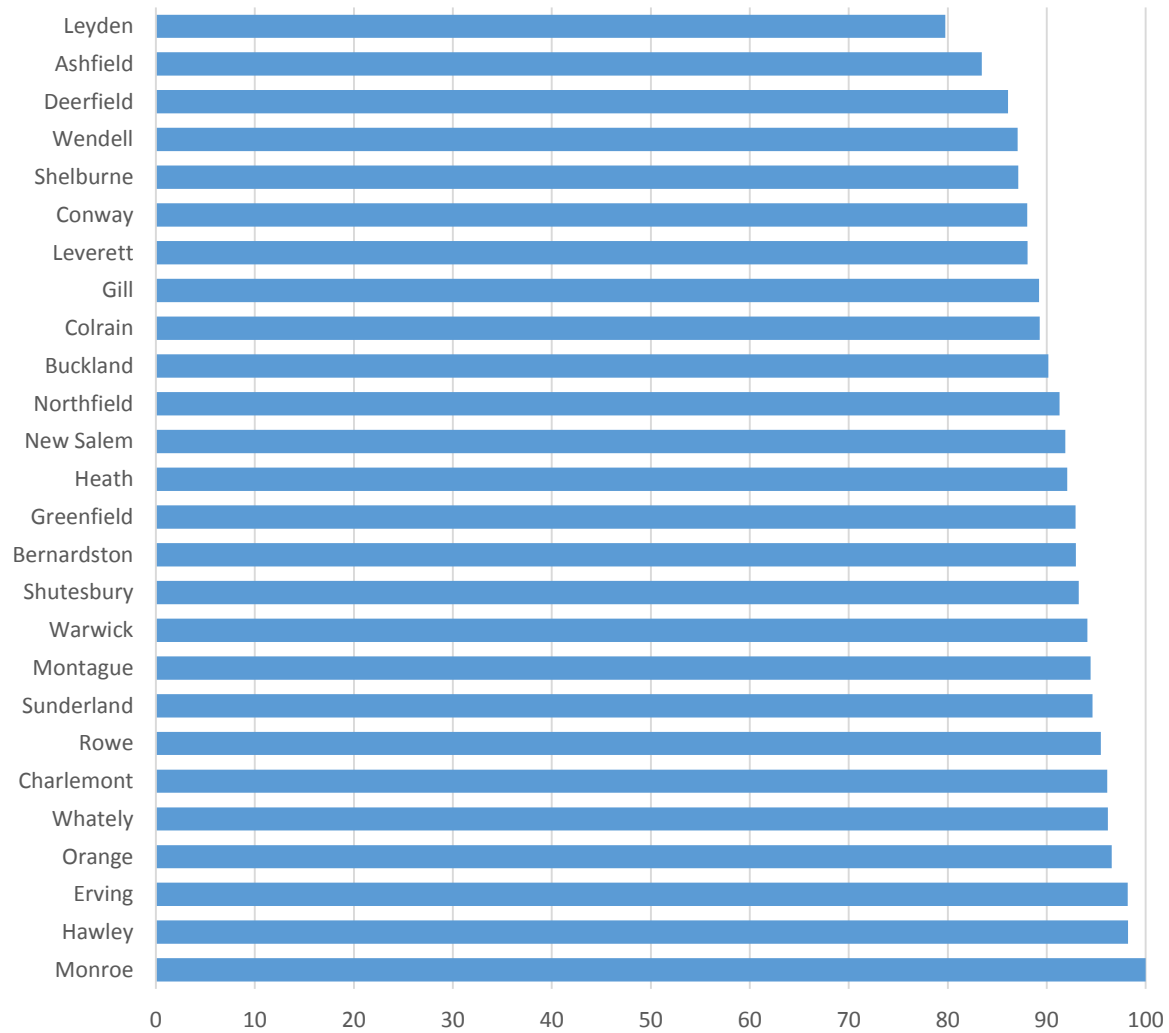
[\[link to online, interactive map \]](#)



[\[link to online, interactive map \]](#)

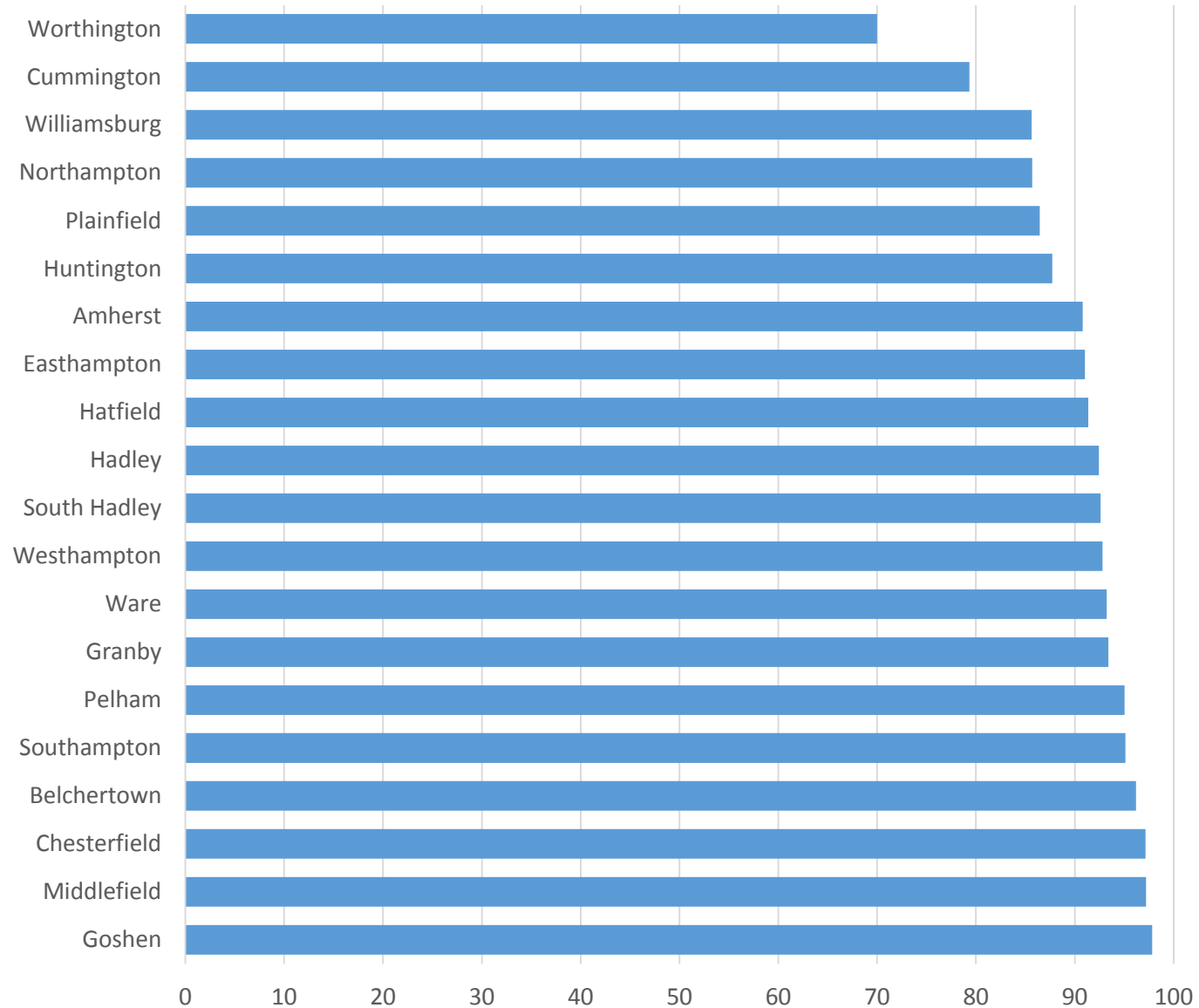


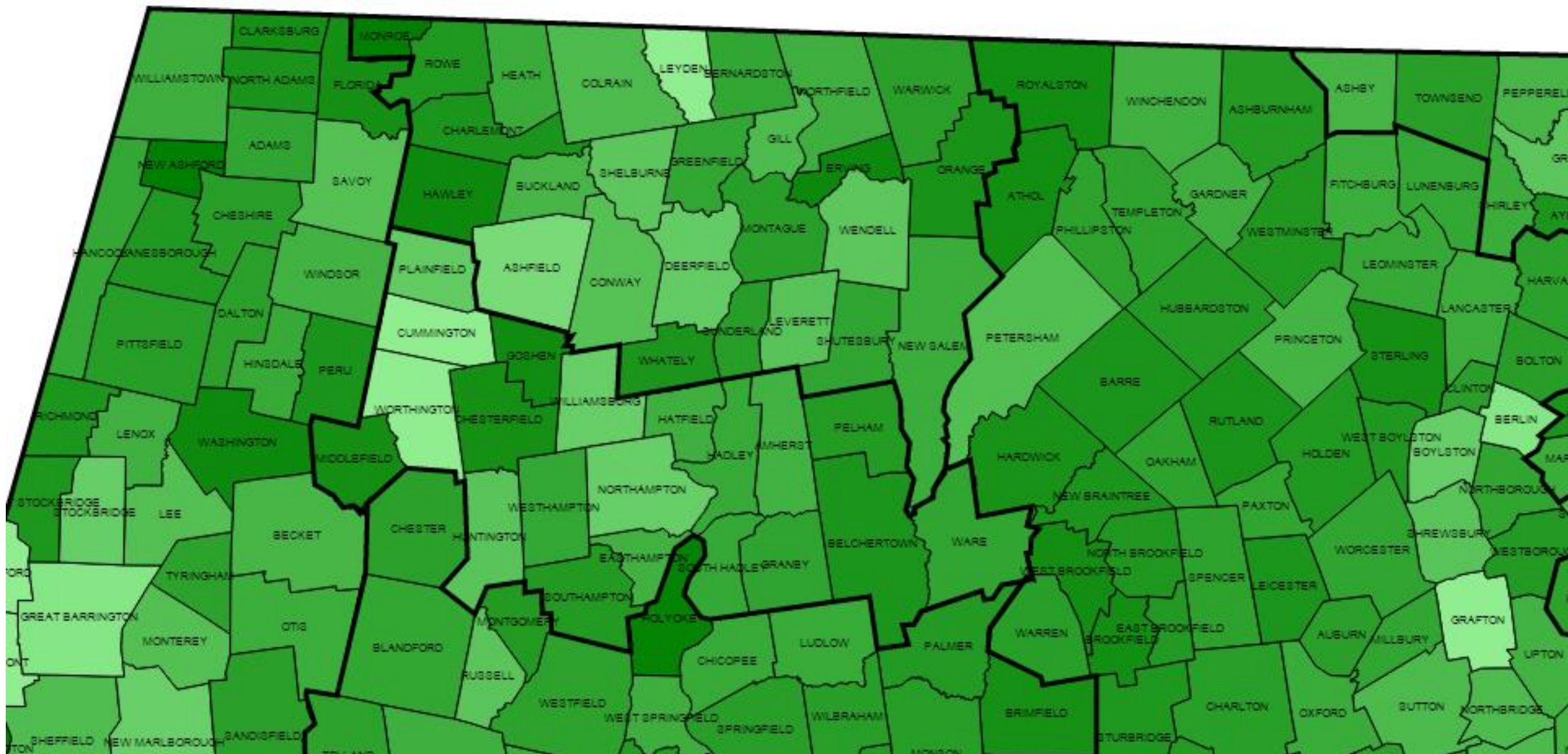
Percent of Students Attending Public Schools
3-Year Average



	Total Public	% Public
Ashfield	574	83
Bernardston	856	93
Buckland	633	90
Charlemont	471	96
Colrain	575	89
Conway	795	88
Deerfield	2143	86
Erving	814	98
Gill	505	89
Greenfield	6208	93
Hawley	110	98
Heath	267	92
Leverett	347	88
Leyden	197	80
Monroe	32	100
Montague	2986	94
New Salem	204	92
Northfield	1334	91
Orange	1999	97
Rowe	190	95
Shelburne	542	87
Shutesbury	427	93
Sunderland	1025	95
Warwick	272	94
Wendell	128	87
Whately	628	96

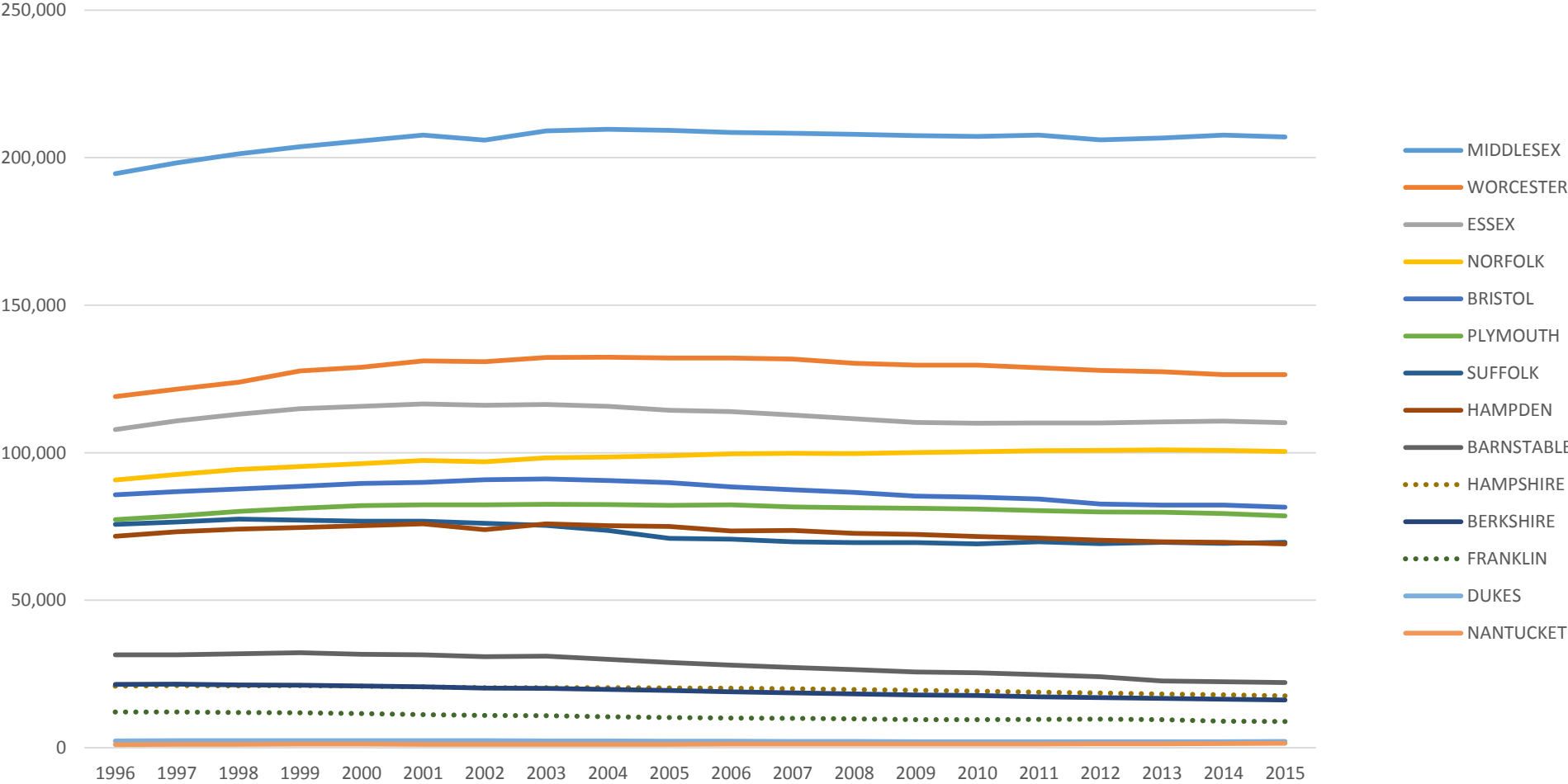
Percent of Hampshire Students Attending Public Schools
3-Year Average



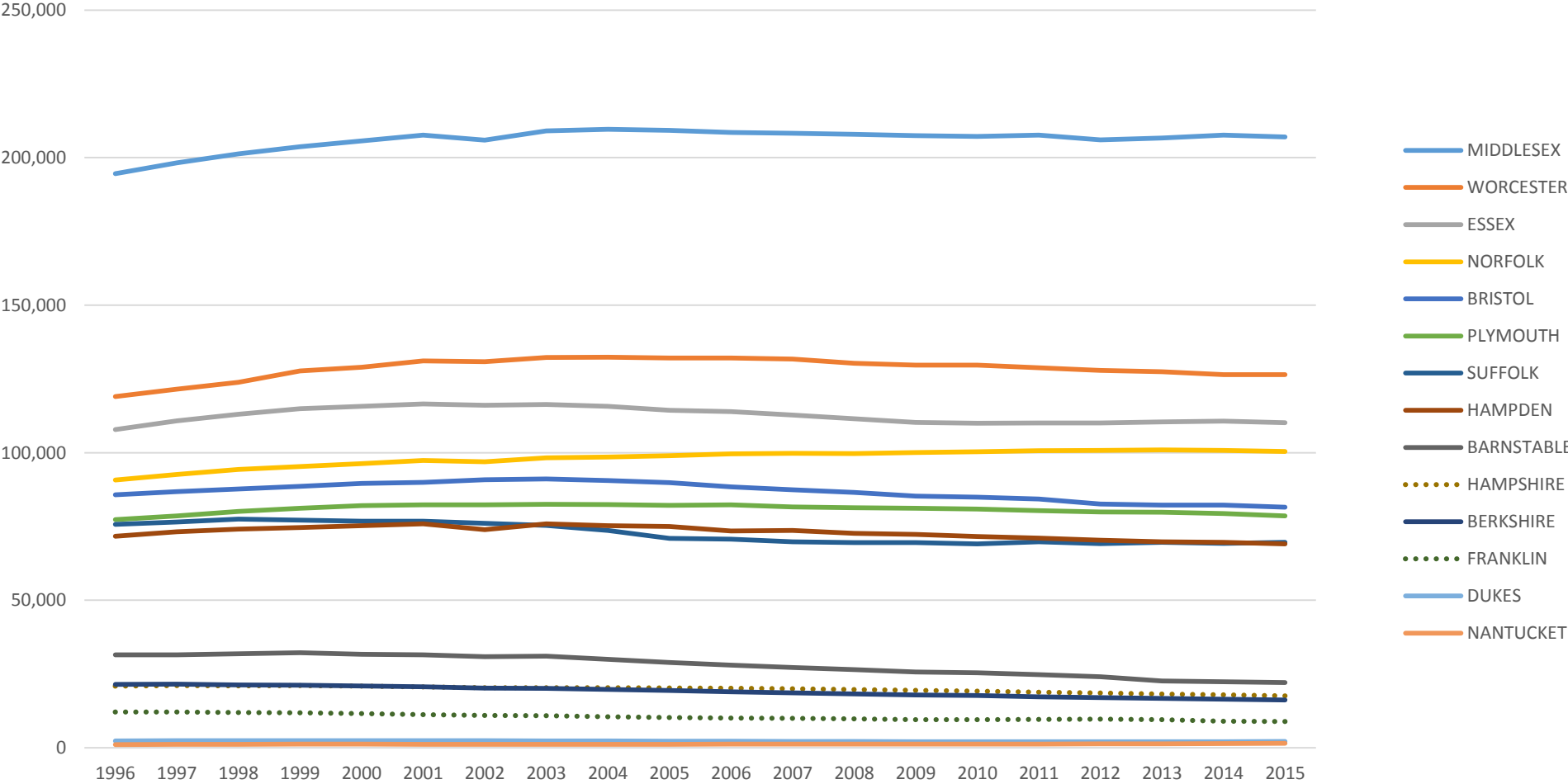


[[link to online, interactive map](#)]

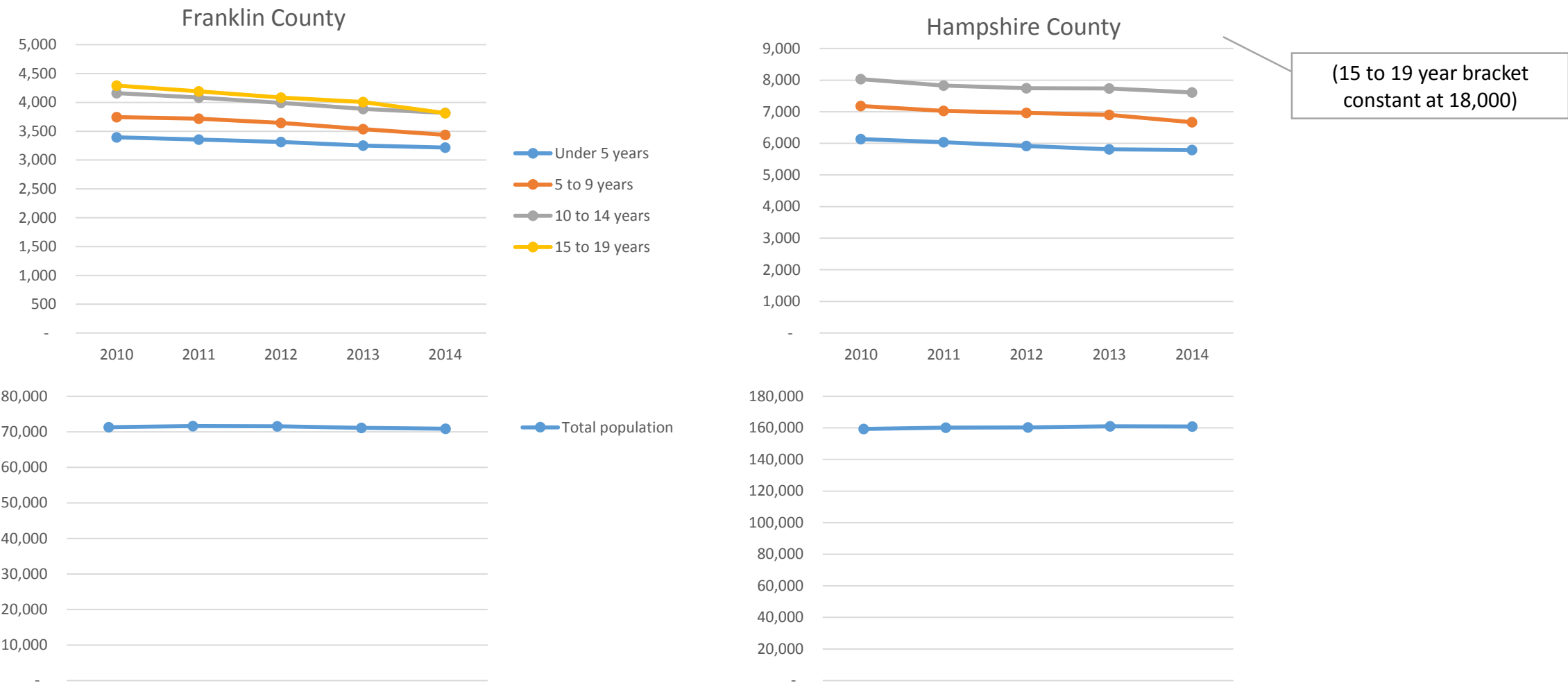
School enrollment, by county



School enrollment, by county

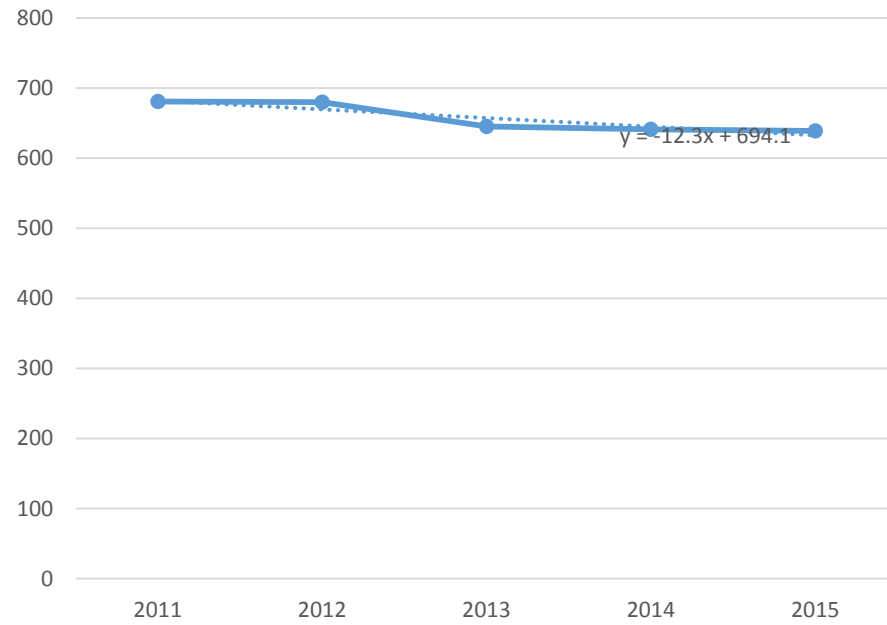


Population Estimates by US Census American Communities Survey

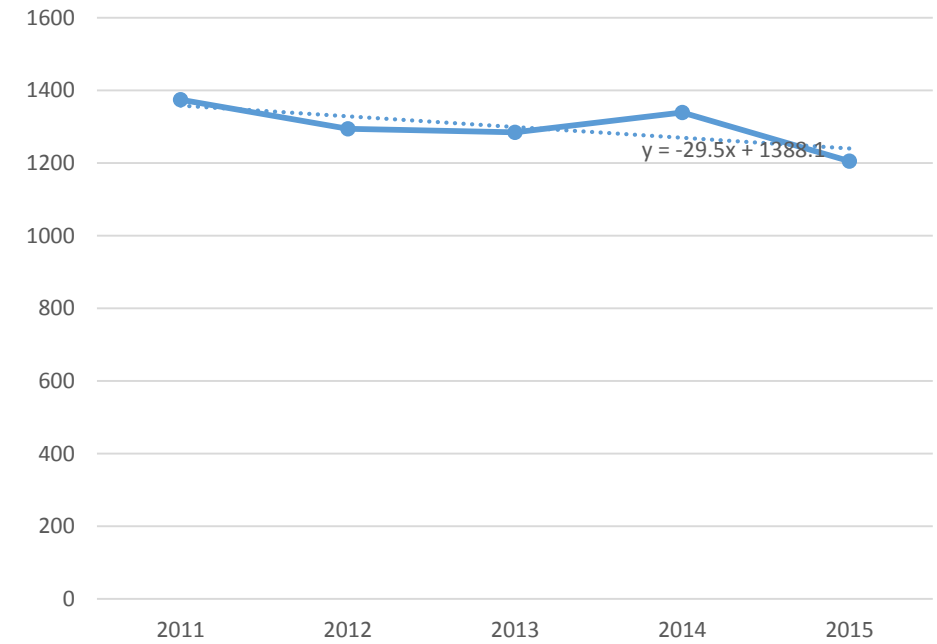


- Patterns indicate declining birth rates.
- Data for each county indicates 10-20 fewer students available to enter first grade each year, per county.
- Extrapolating to 12 grades we could expect 120-240 fewer students per year in public schools, per county.

Franklin Public Grade 1 Enrollment

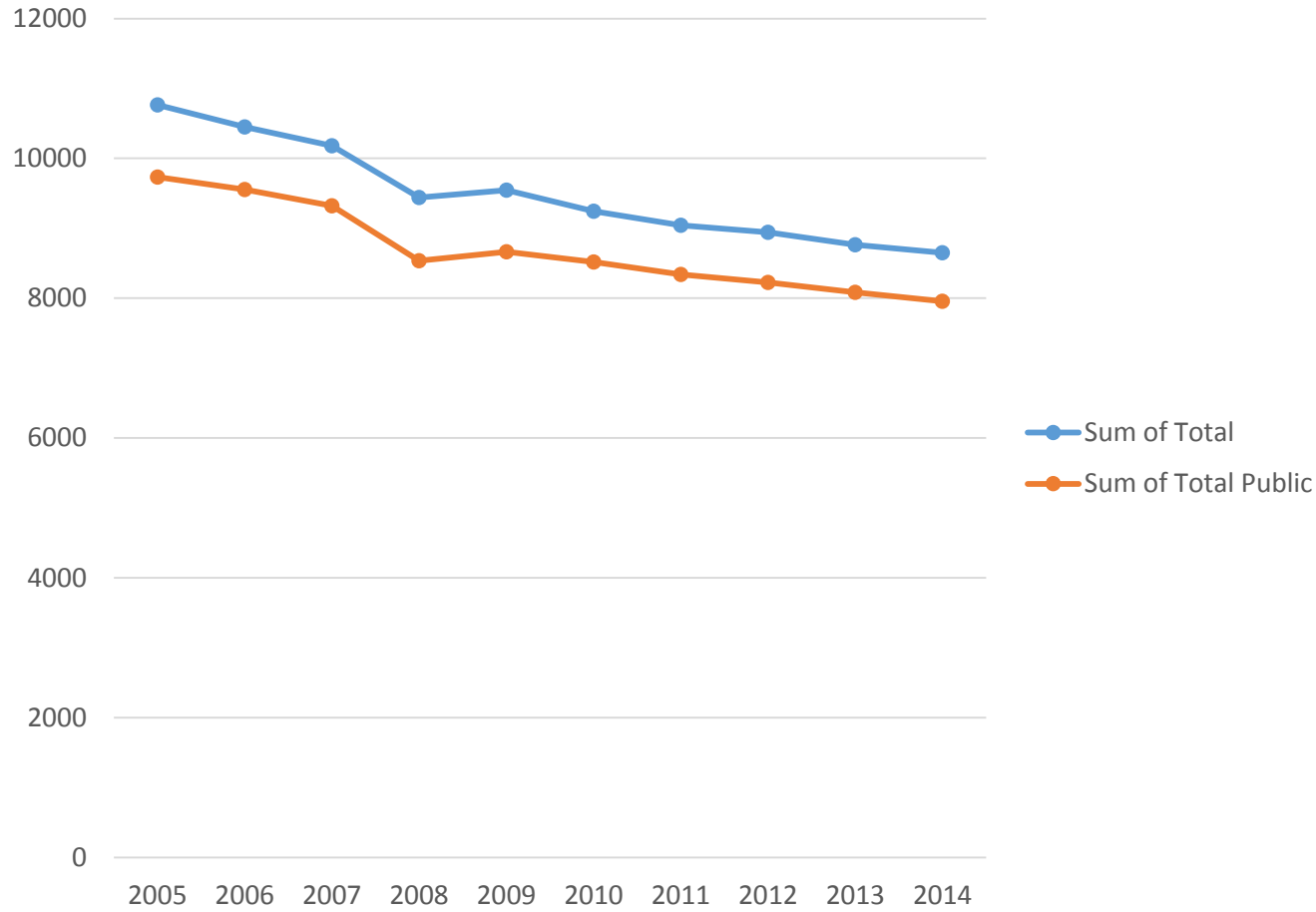


Hampshire Public Grade 1 Enrollment

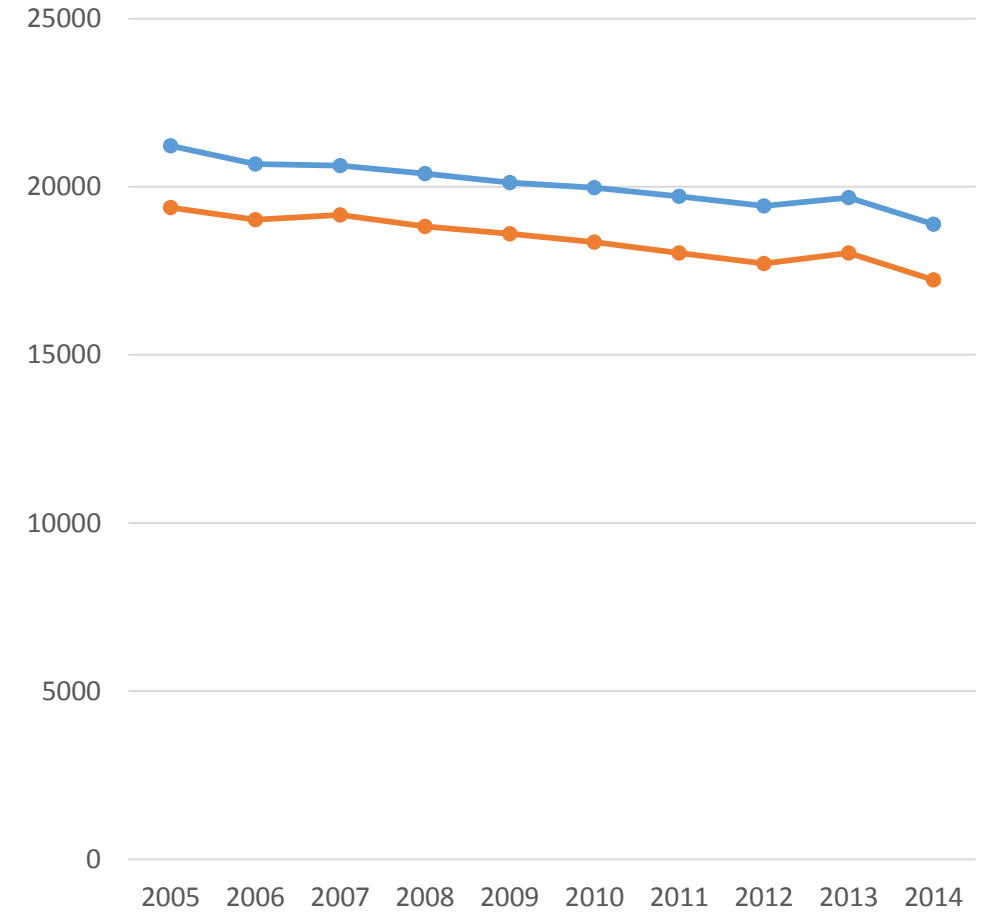


Total Students and Total Enrolled in Public Schools

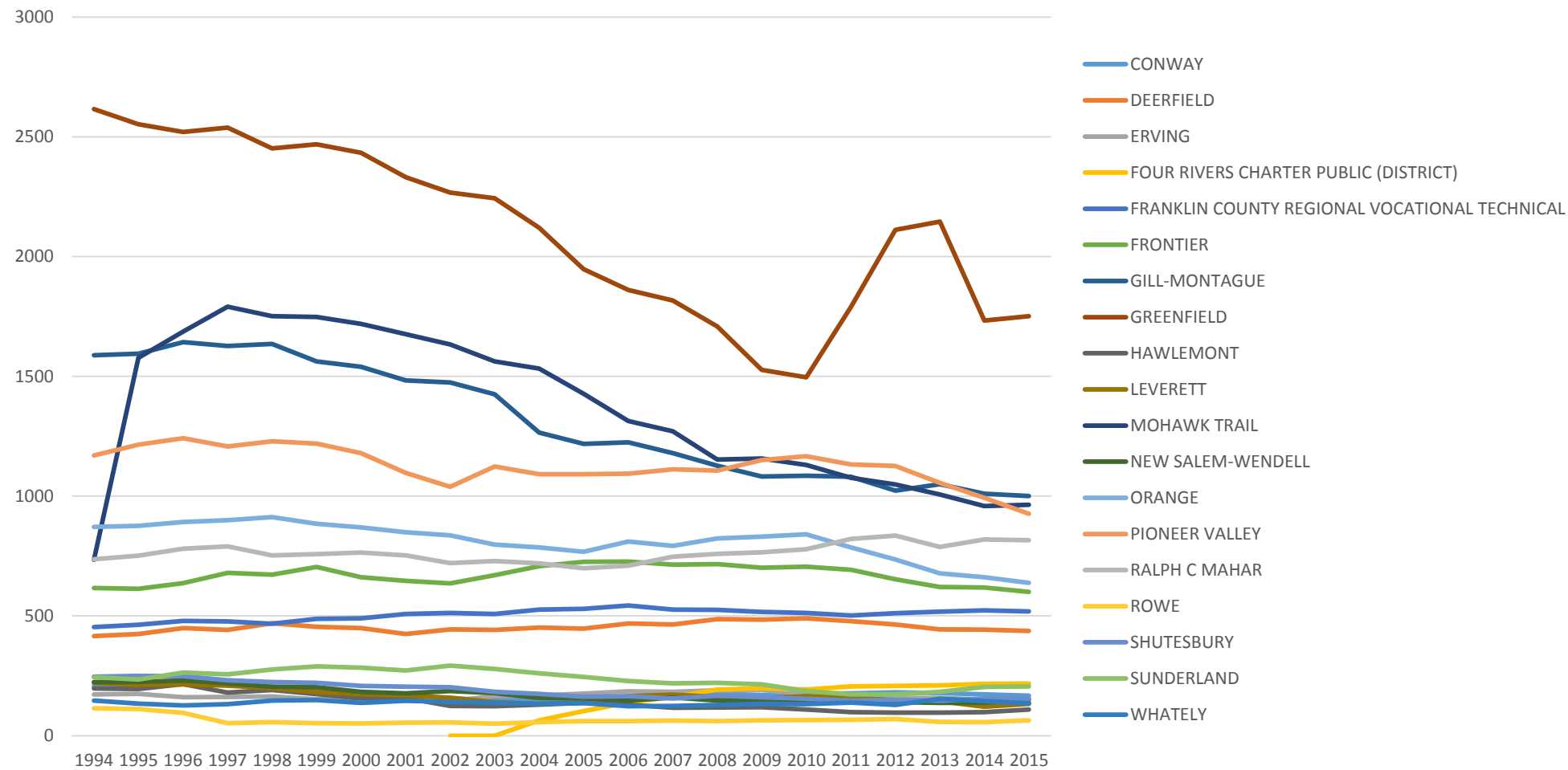
Franklin County



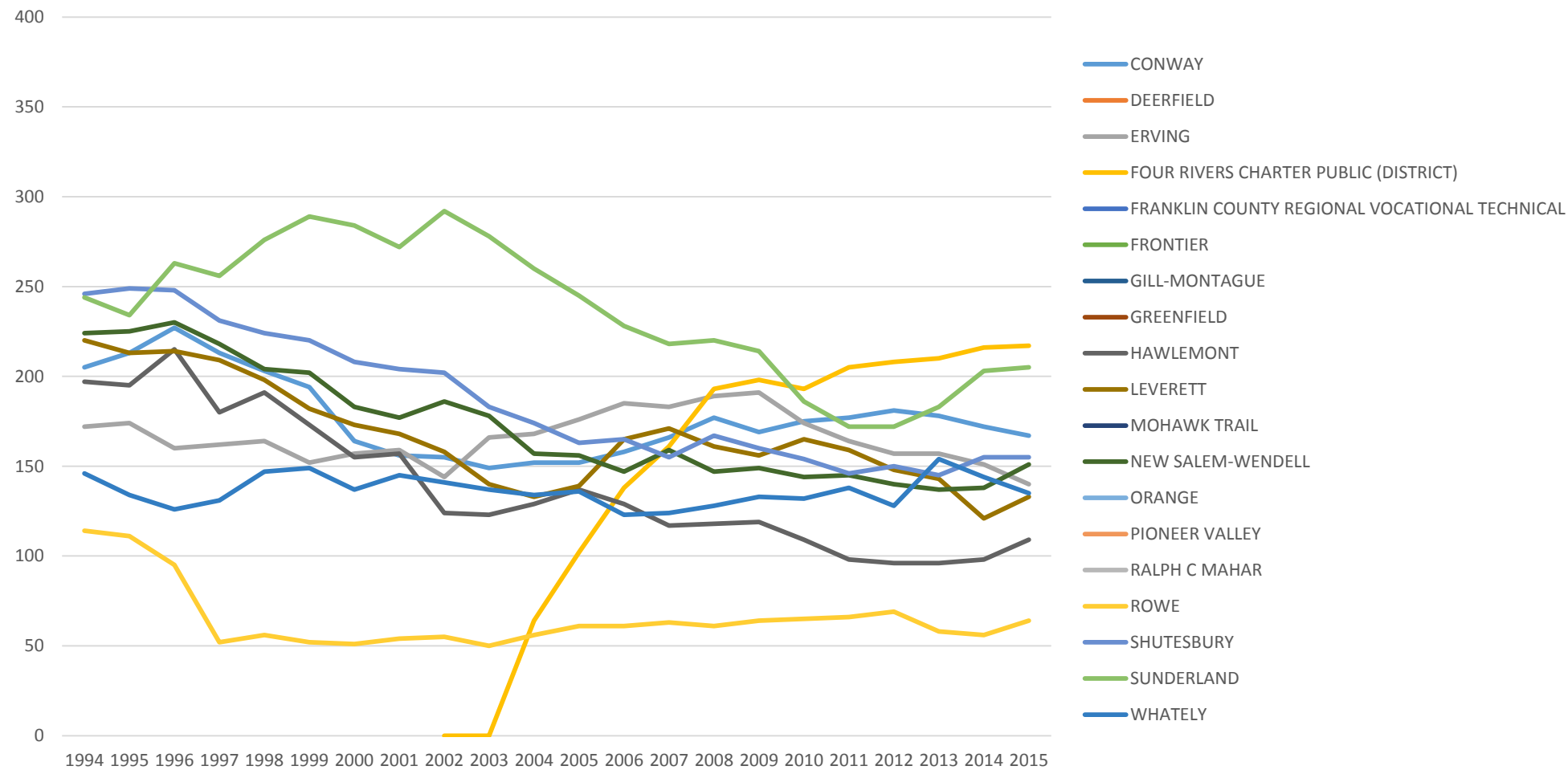
Hampshire County



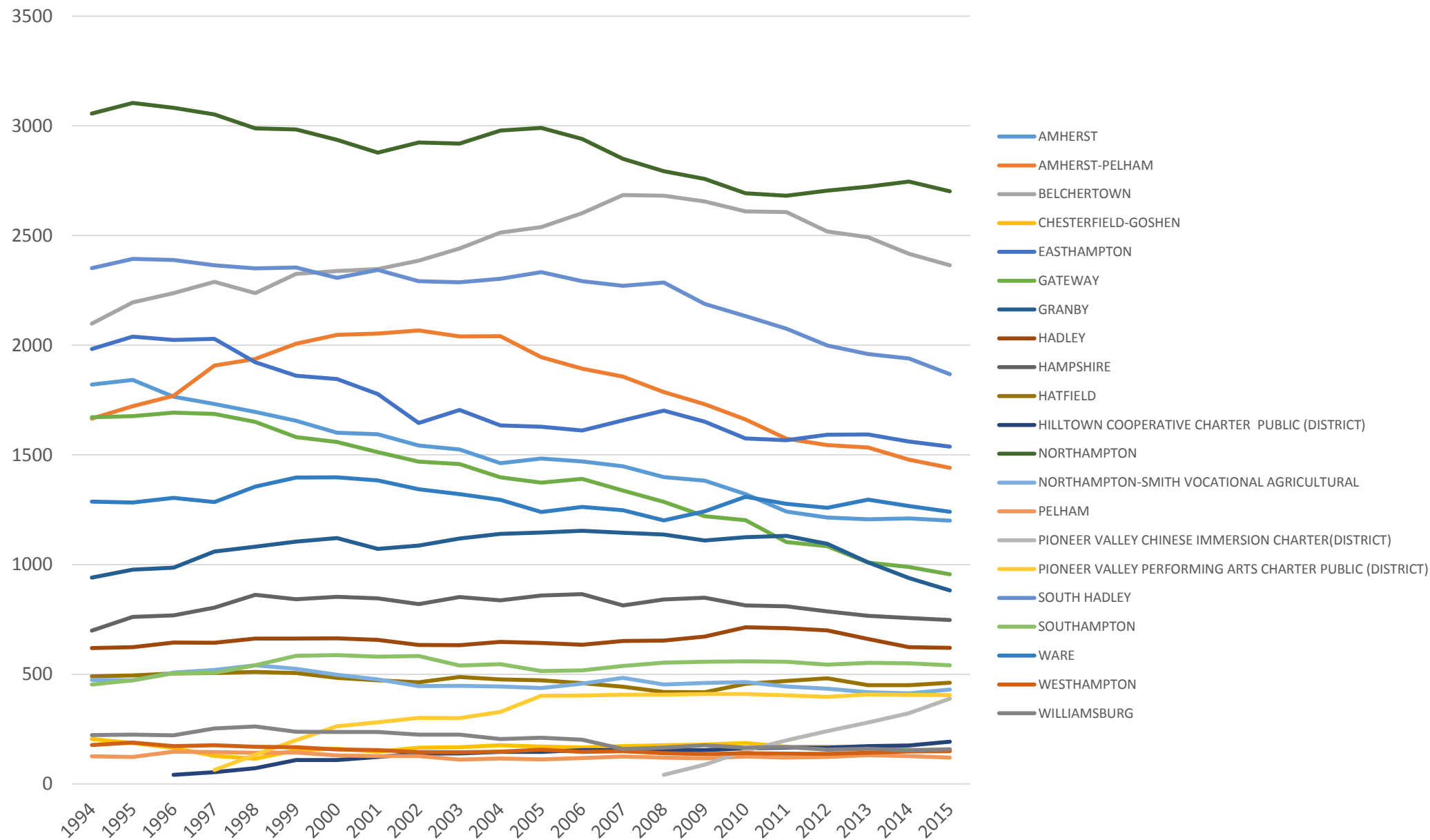
District enrollment histories for Franklin County



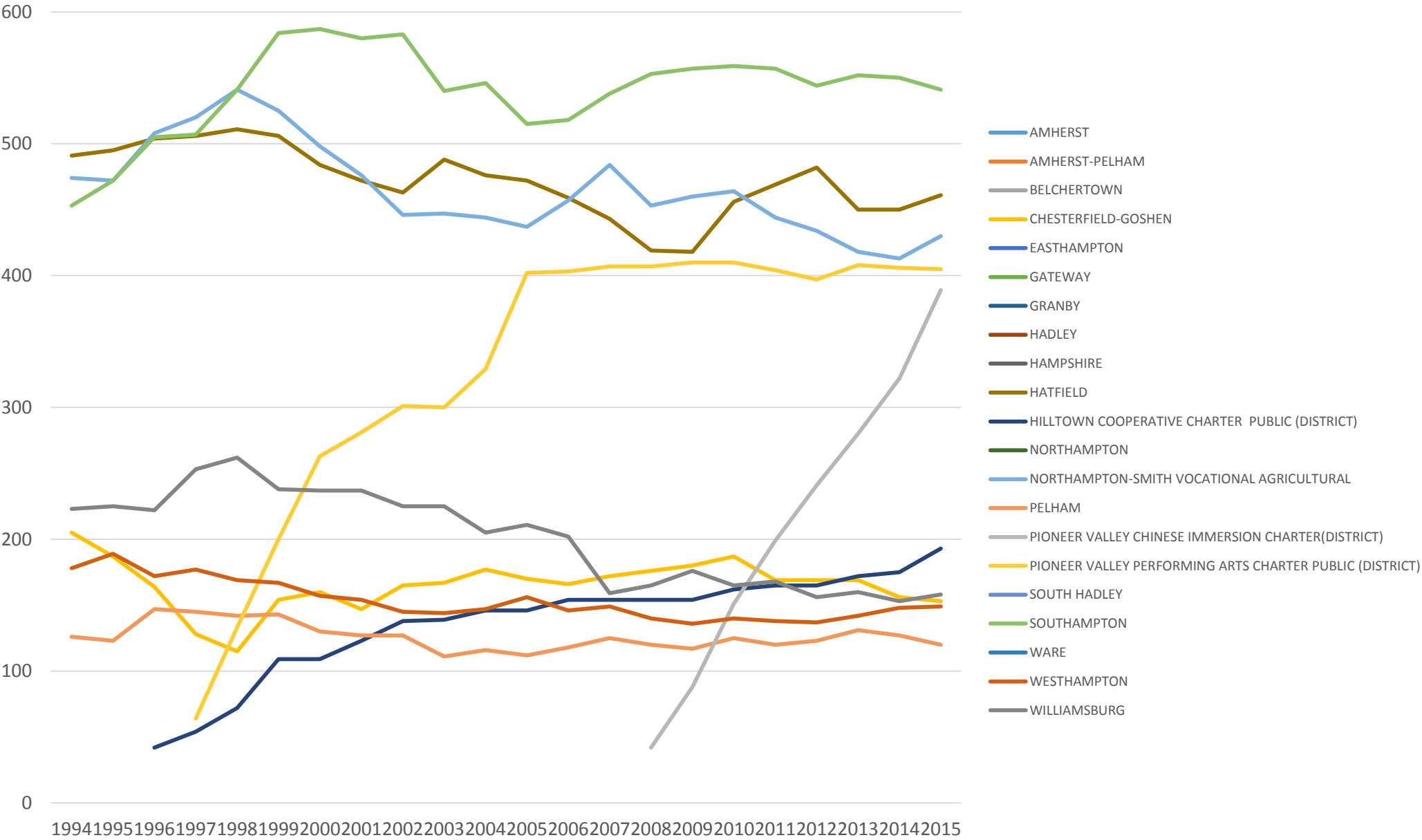
District enrollment histories for Franklin County



District enrollment histories for Hampshire County



District enrollment histories for Hampshire County



Districts Sending Students to Four Rivers Charter

Sending District	County	Total
GREENFIELD	FRANKLIN	60
MOHAWK TRAIL	FRANKLIN	47
GILL-MONTAGUE	FRANKLIN	41
FRONTIER	FRANKLIN	17
PIONEER VALLEY	FRANKLIN	16
RALPH C MAHAR	FRANKLIN	16
ERVING	FRANKLIN	11
HAMPSHIRE	HAMPSHIRE	4
ROWE	FRANKLIN	2
AMHERST-PELHAM	HAMPSHIRE	2
NORTHAMPTON	HAMPSHIRE	2
BELCHERTOWN	HAMPSHIRE	1
HADLEY	HAMPSHIRE	1

Districts Sending Students to Pioneer Valley Chinese Immersion Charter

Sending District	County	Total
AMHERST	HAMPSHIRE	78
NORTHAMPTON	HAMPSHIRE	56
SOUTH HADLEY	HAMPSHIRE	43
SPRINGFIELD	HAMPDEN	41
AMHERST-PELHAM	HAMPSHIRE	36
EASTHAMPTON	HAMPSHIRE	27
GREENFIELD	FRANKLIN	27
HADLEY	HAMPSHIRE	26
HOLYOKE	HAMPDEN	26
BELCHERTOWN	HAMPSHIRE	23
GILL-MONTAGUE	FRANKLIN	21
GRANBY	HAMPSHIRE	17
CHICOPEE	HAMPDEN	8
DEERFIELD	FRANKLIN	7
FRONTIER	FRANKLIN	7
AGAWAM	HAMPDEN	6
WESTFIELD	HAMPDEN	6
EAST LONGMEADOW	HAMPDEN	4
CONWAY	FRANKLIN	4
LONGMEADOW	HAMPDEN	4
WEST SPRINGFIELD	HAMPDEN	3
CENTRAL BERKSHIRE	BERKSHIRE	2
LEVERETT	FRANKLIN	2
ORANGE	FRANKLIN	2
WESTHAMPTON	HAMPSHIRE	2
WILLIAMSBURG	HAMPSHIRE	2
MOHAWK TRAIL	FRANKLIN	1
SHUTESBURY	FRANKLIN	1
SUNDERLAND	FRANKLIN	1

Districts Sending Students to Pioneer Valley Performing Arts Charter

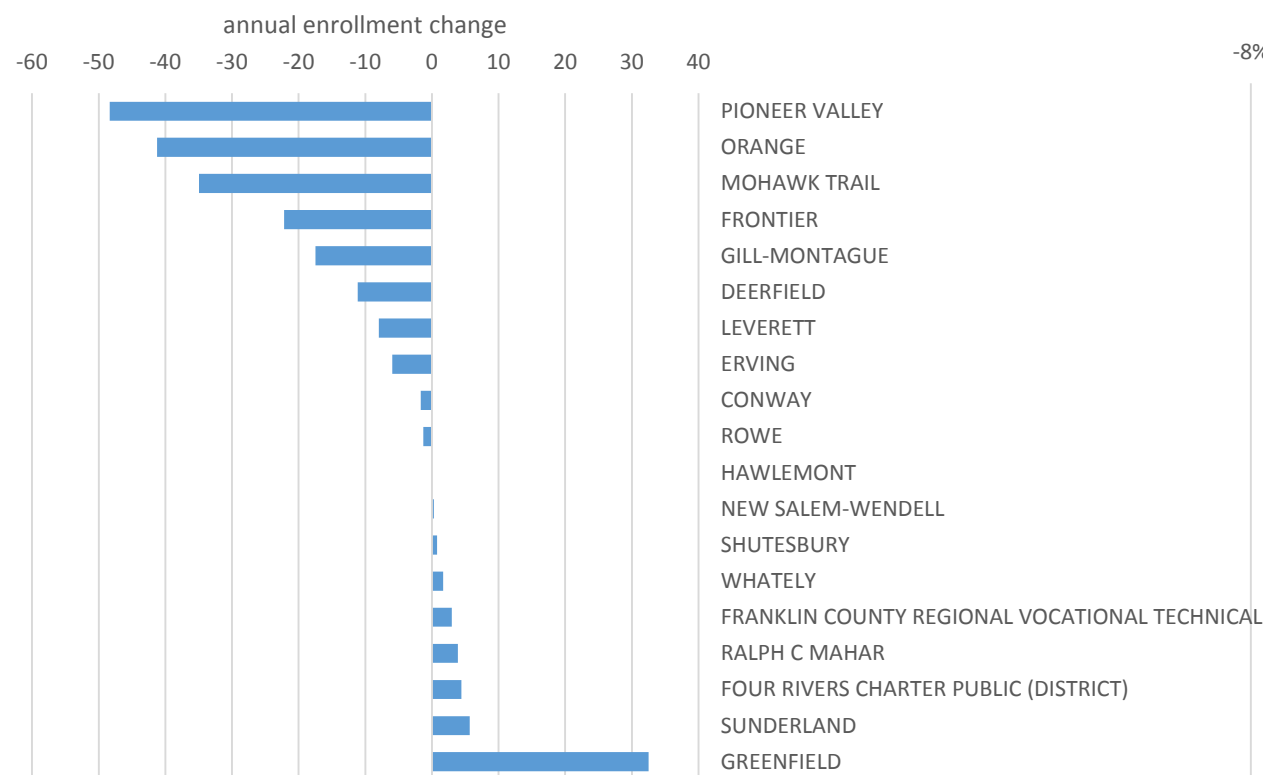
Sending District	County	Total
AMHERST-PELHAM	HAMPSHIRE	55
NORTHAMPTON	HAMPSHIRE	54
SPRINGFIELD	HAMPDEN	51
SOUTH HADLEY	HAMPSHIRE	43
BELCHERTOWN	HAMPSHIRE	33
CHICOPEE	HAMPDEN	29
HOLYOKE	HAMPDEN	19
EASTHAMPTON	HAMPSHIRE	17
FRONTIER	FRANKLIN	13
HAMPSHIRE	HAMPSHIRE	11
HADLEY	HAMPSHIRE	10
MONSON	HAMPDEN	8
GREENFIELD	FRANKLIN	7
GILL-MONTAGUE	FRANKLIN	6
GRANBY	HAMPSHIRE	5
AGAWAM	HAMPDEN	4
LONGMEADOW	HAMPDEN	4
LUDLOW	HAMPDEN	3
PALMER	HAMPDEN	3
MOHAWK TRAIL	FRANKLIN	3
WEST SPRINGFIELD	HAMPDEN	3
WESTFIELD	HAMPDEN	3
GATEWAY	HAMPSHIRE	2
HAMPDEN-WILBRAHAM	HAMPDEN	2
ERVING	FRANKLIN	2
RALPH C MAHAR	FRANKLIN	2
WARE	HAMPSHIRE	2
CENTRAL BERKSHIRE	BERKSHIRE	1
EAST LONGMEADOW	HAMPDEN	1
LEE	BERKSHIRE	1

Districts Sending Students to Hilltown Cooperative Charter

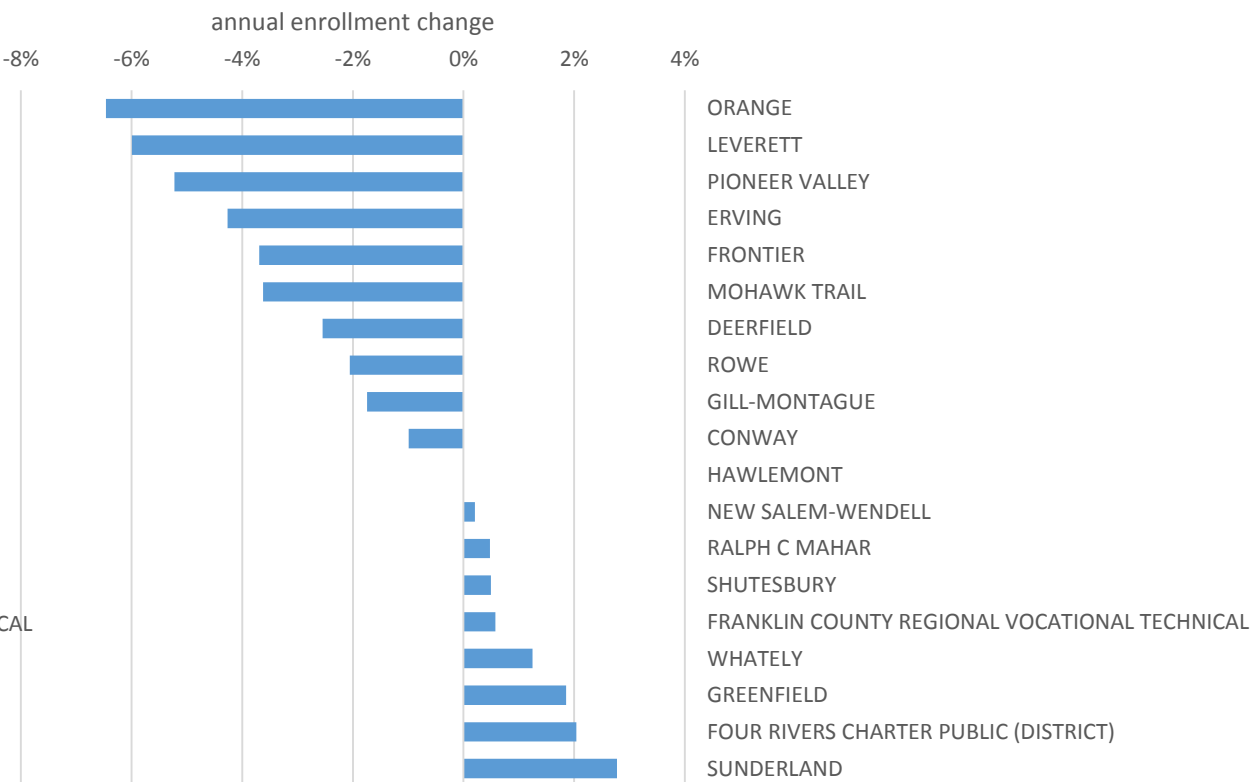
Sending District	County	Total
NORTHAMPTON	HAMPSHIRE	114
EASTHAMPTON	HAMPSHIRE	39
WILLIAMSBURG	HAMPSHIRE	17
HATFIELD	HAMPSHIRE	9
HAMPSHIRE	HAMPSHIRE	7
SOUTH HADLEY	HAMPSHIRE	6
HADLEY	HAMPSHIRE	5
SUNDERLAND	FRANKLIN	3
WESTHAMPTON	HAMPSHIRE	3
AMHERST	HAMPSHIRE	2
CHESTERFIELD-GOSHEN	HAMPSHIRE	2
CENTRAL BERKSHIRE	BERKSHIRE	1
CONWAY	FRANKLIN	1
DEERFIELD	FRANKLIN	1
GILL-MONTAGUE	FRANKLIN	1
MOHAWK TRAIL	FRANKLIN	1
SOUTHAMPTON	HAMPSHIRE	1

District Enrollment Trends in Franklin County

5 Year Annual Enrollment Trend

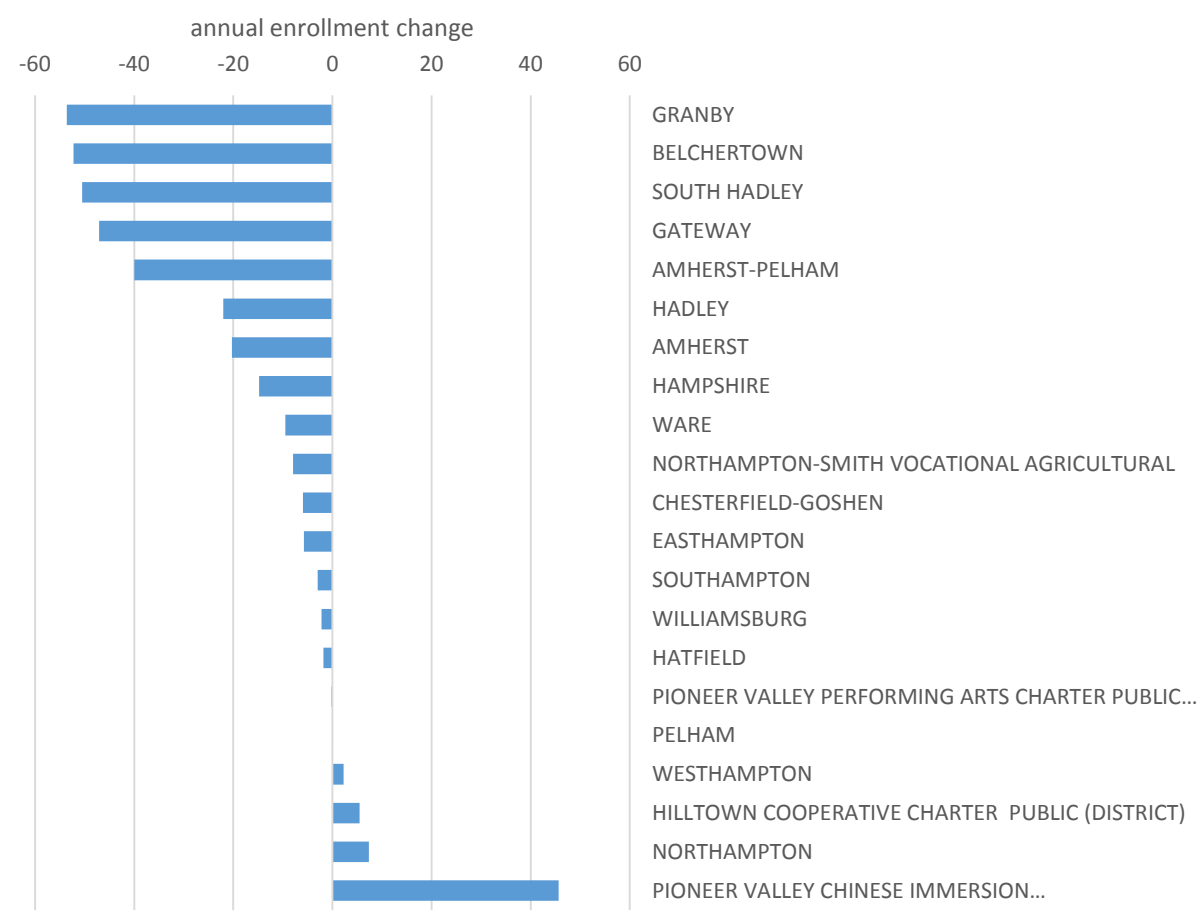


5 Year Annual Enrollment Trend Relative to Current Enrollment

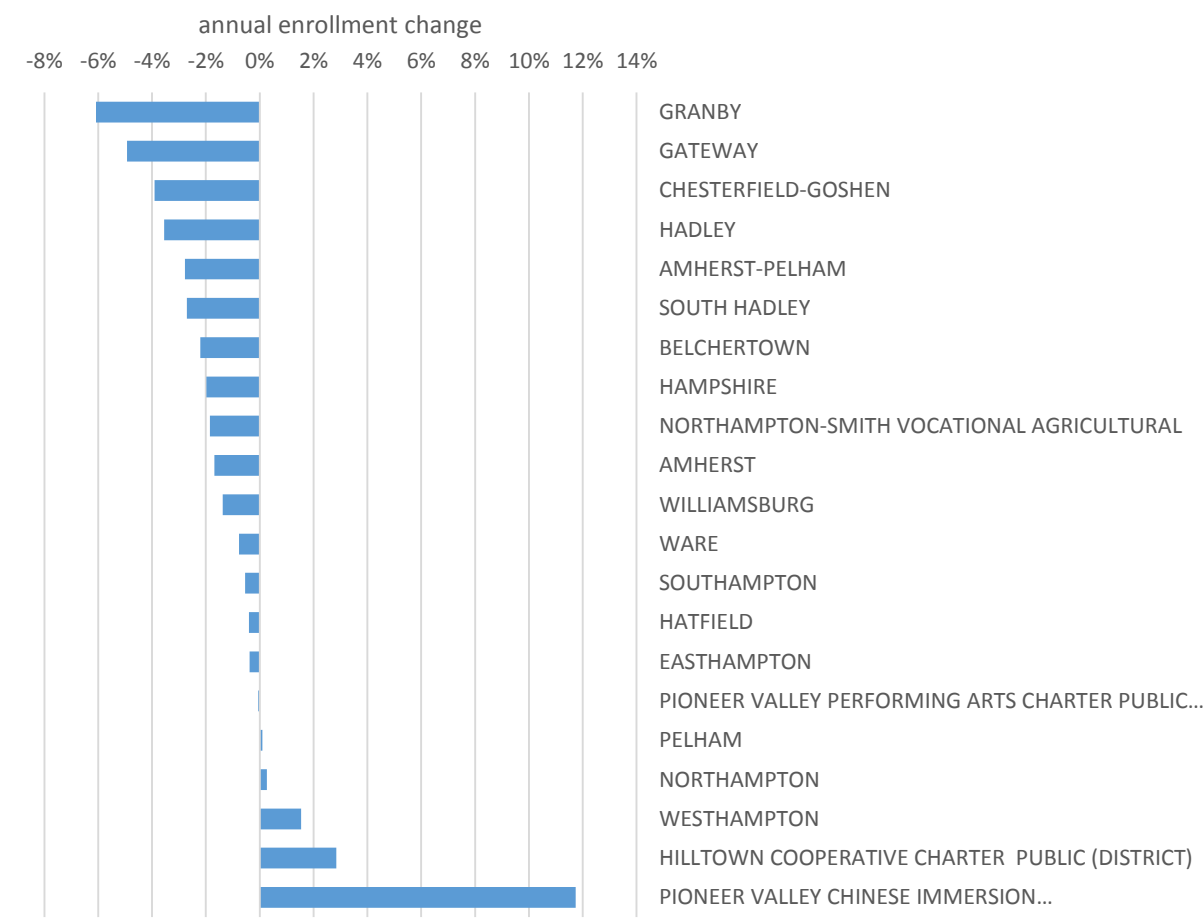


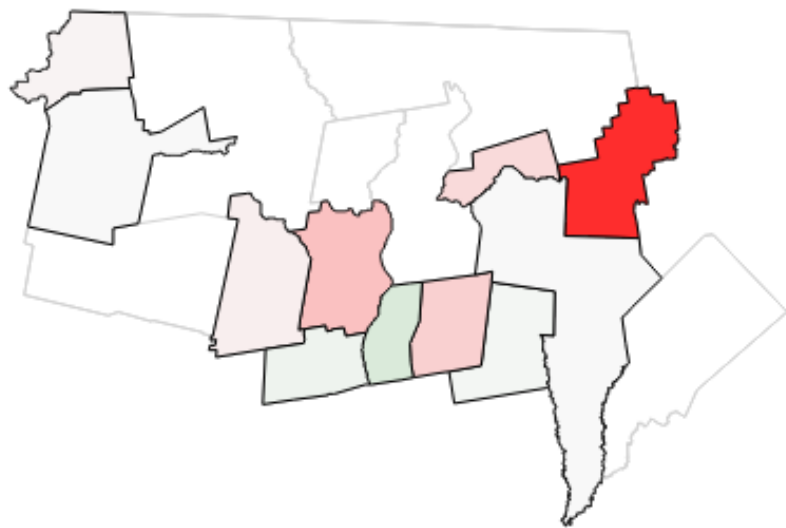
District Enrollment Trends in Hampshire County

5 Year Annual Enrollment Trend

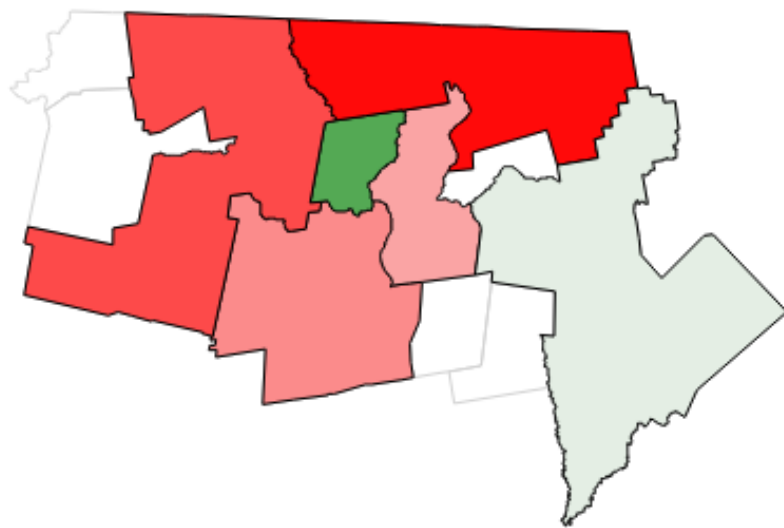


5 Year Annual Enrollment Trend Relative to Current Enrollment

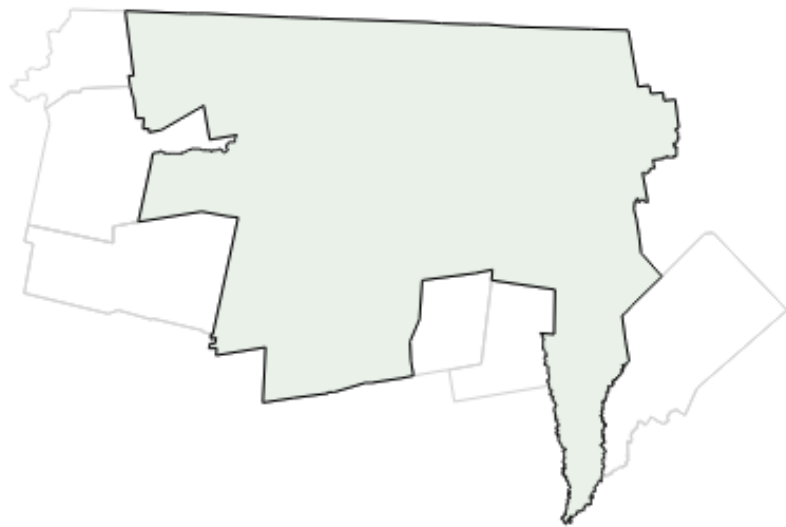




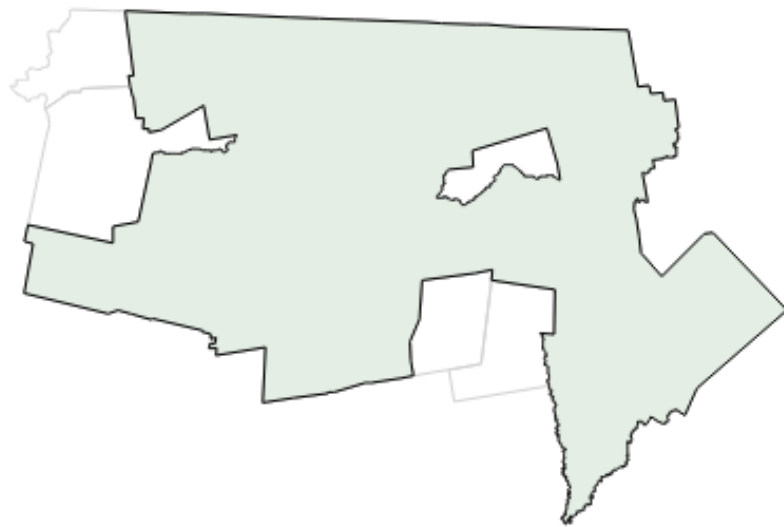
Elementary (ending grade < 9)



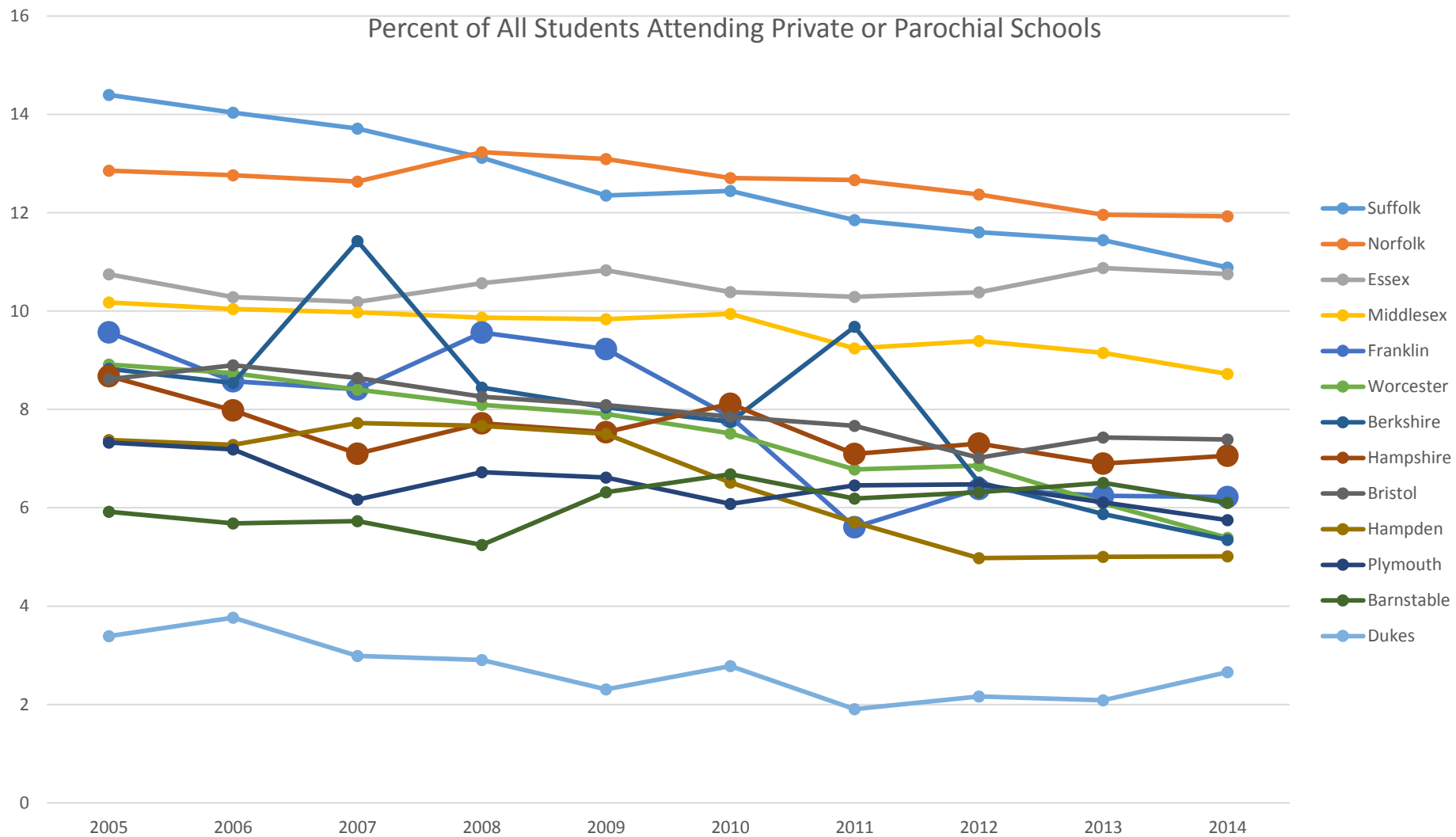
Secondary (ending grade >= 9)

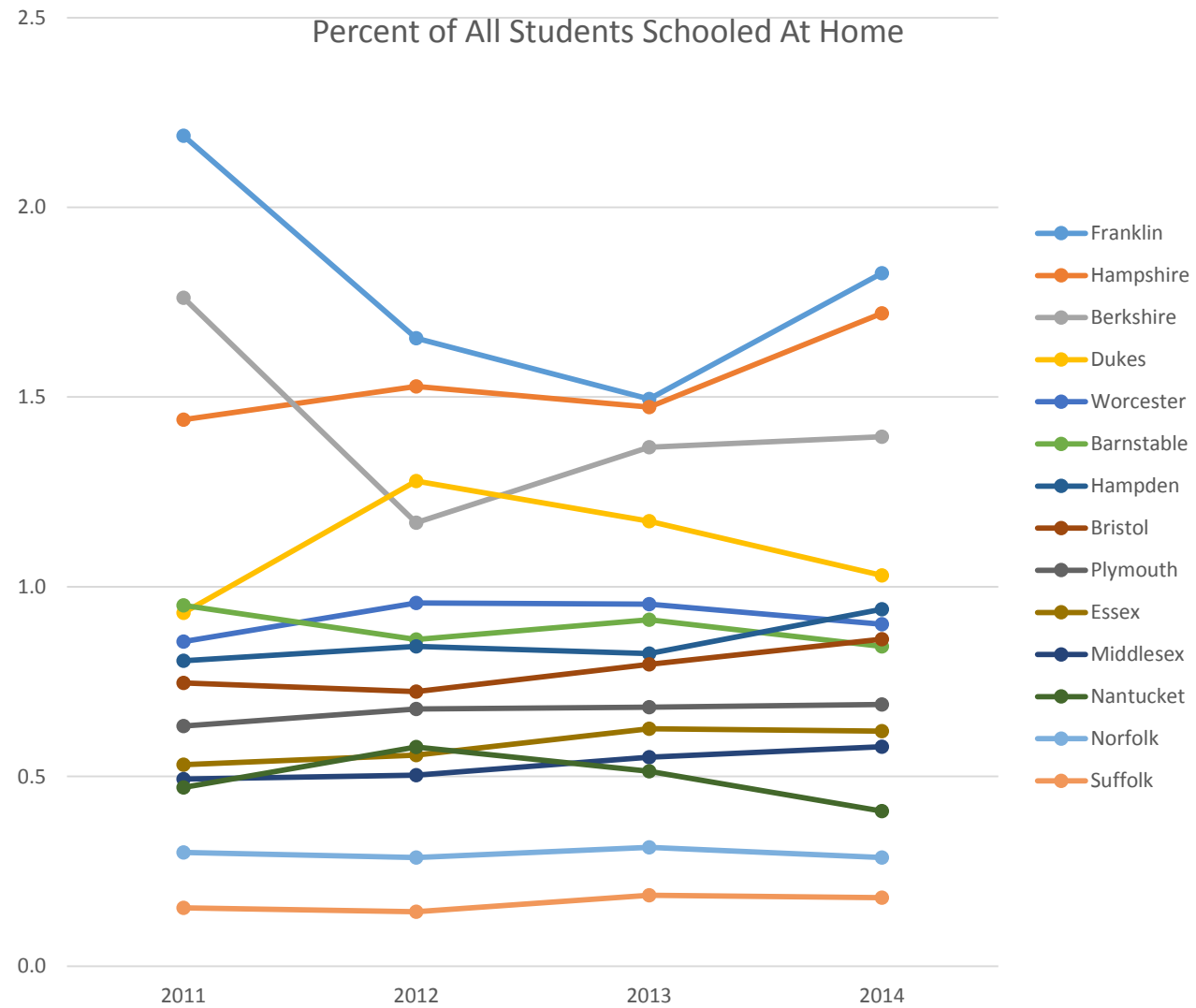


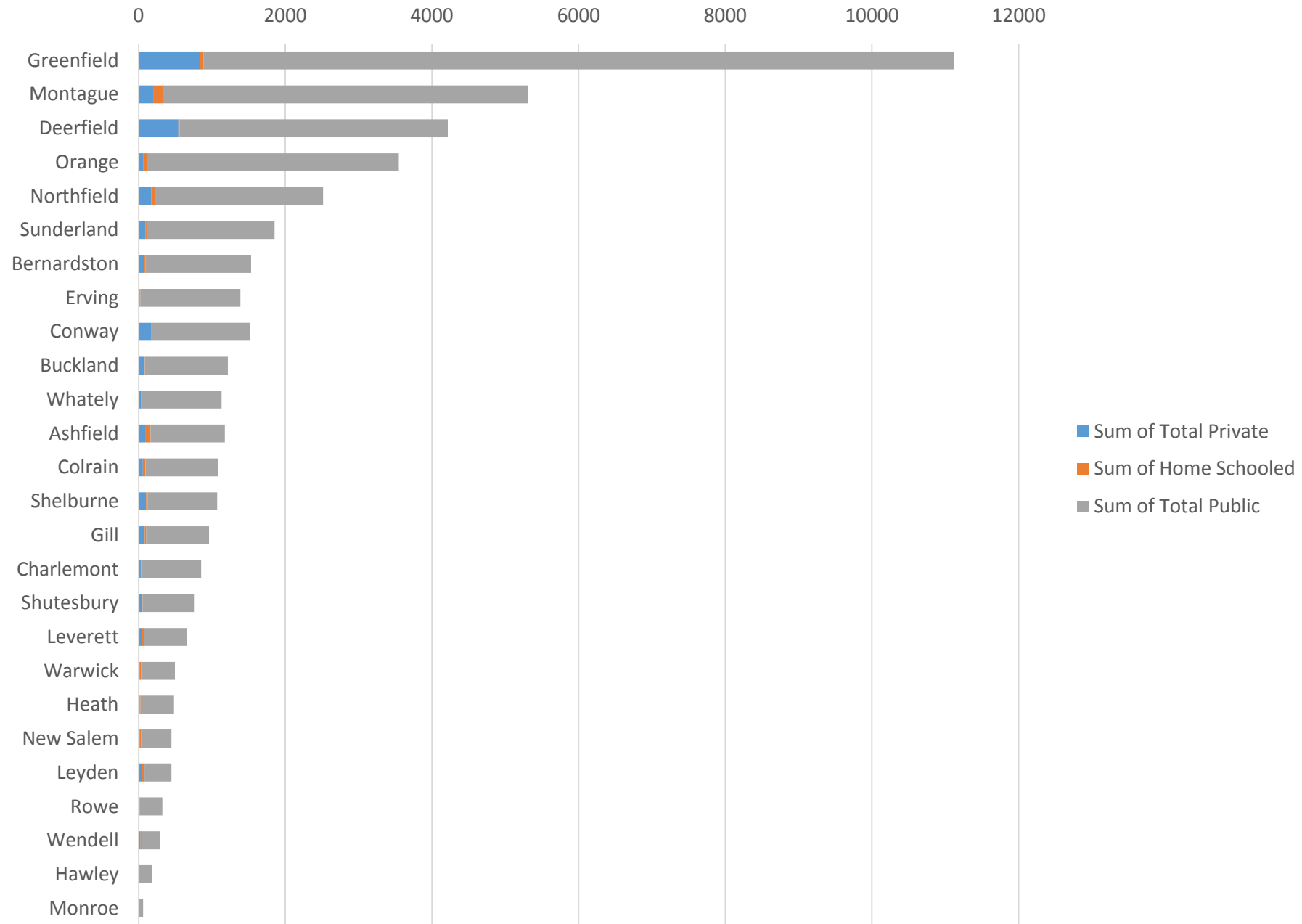
Regional Voc Tech

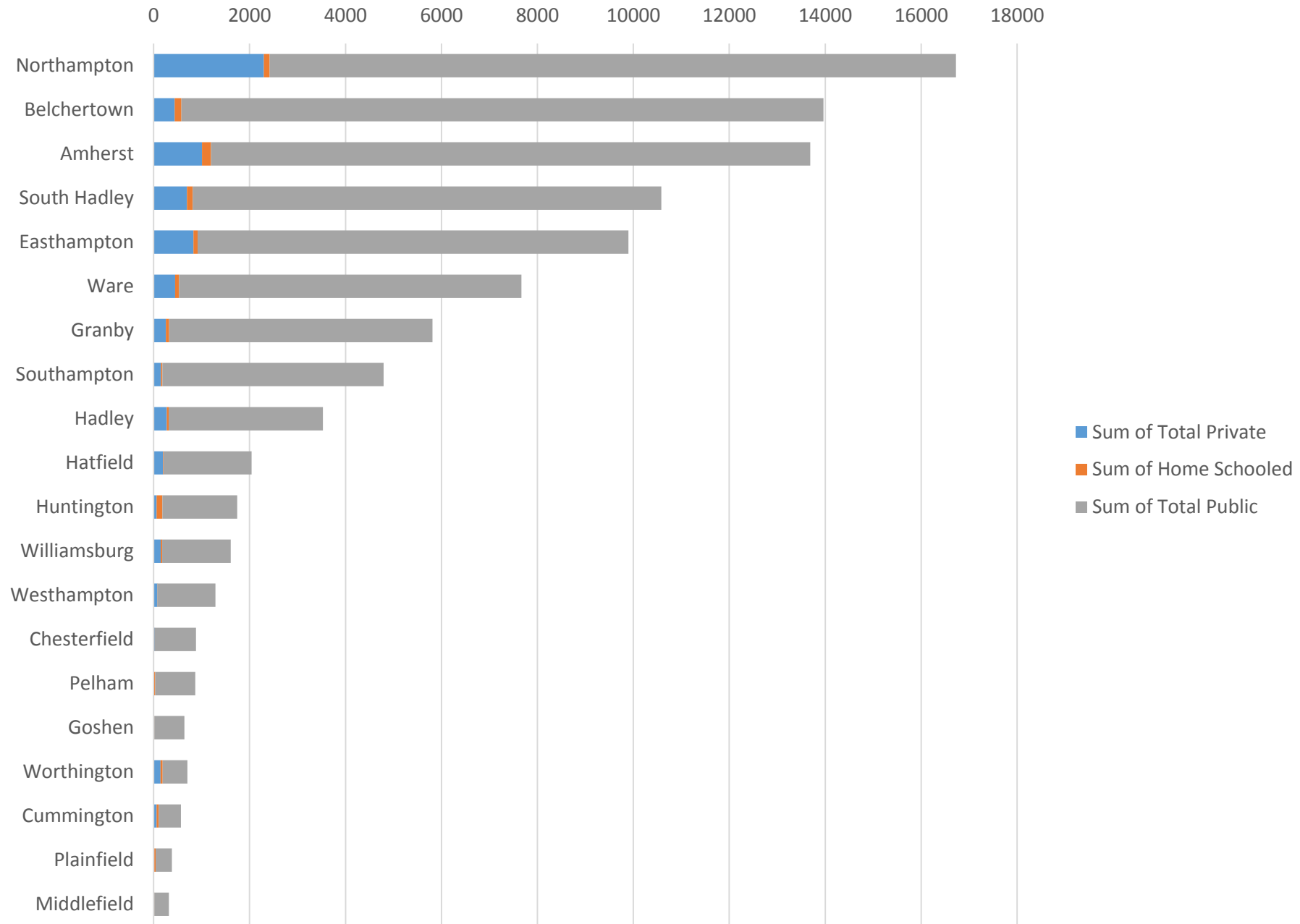


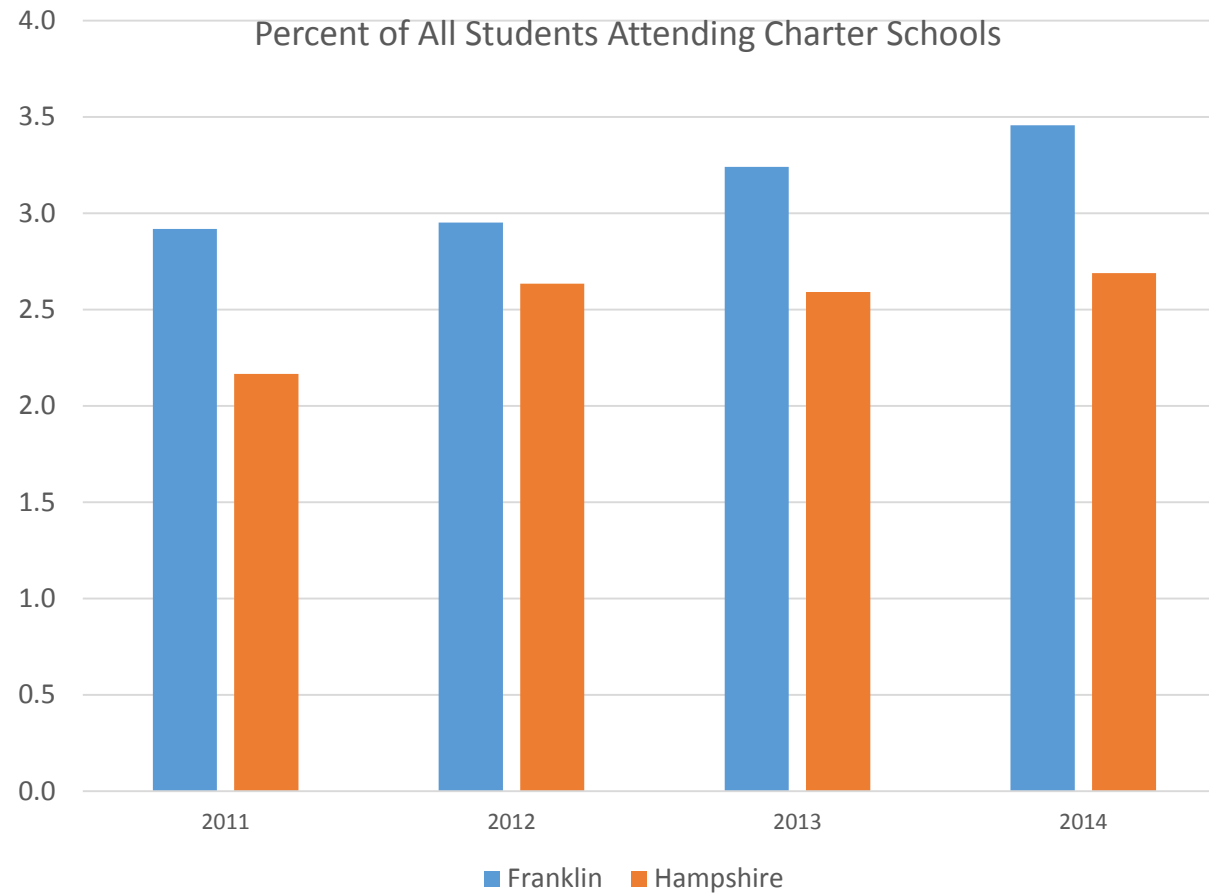
Charter



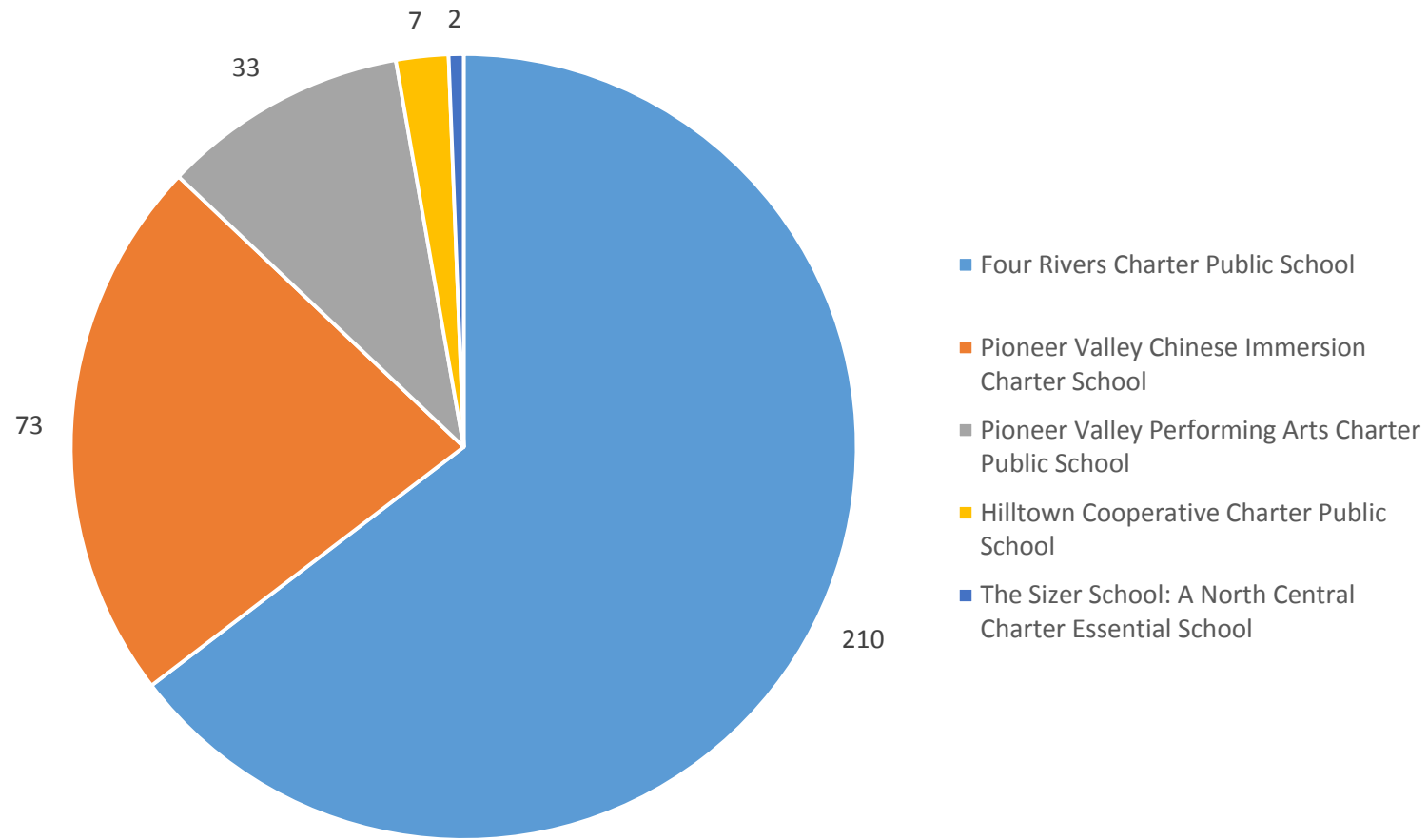




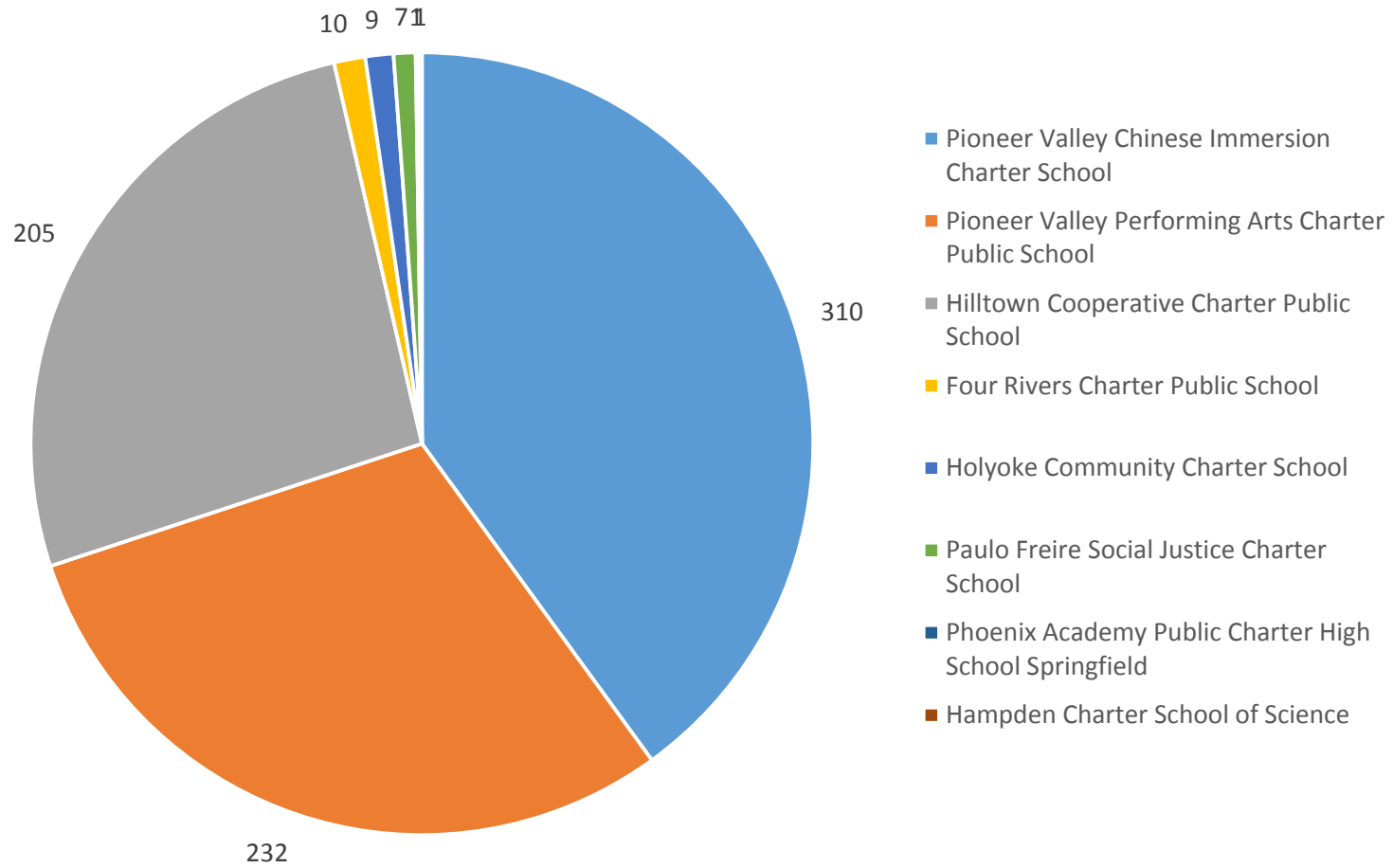




Students Sent to Charter Schools From Franklin County in 2015

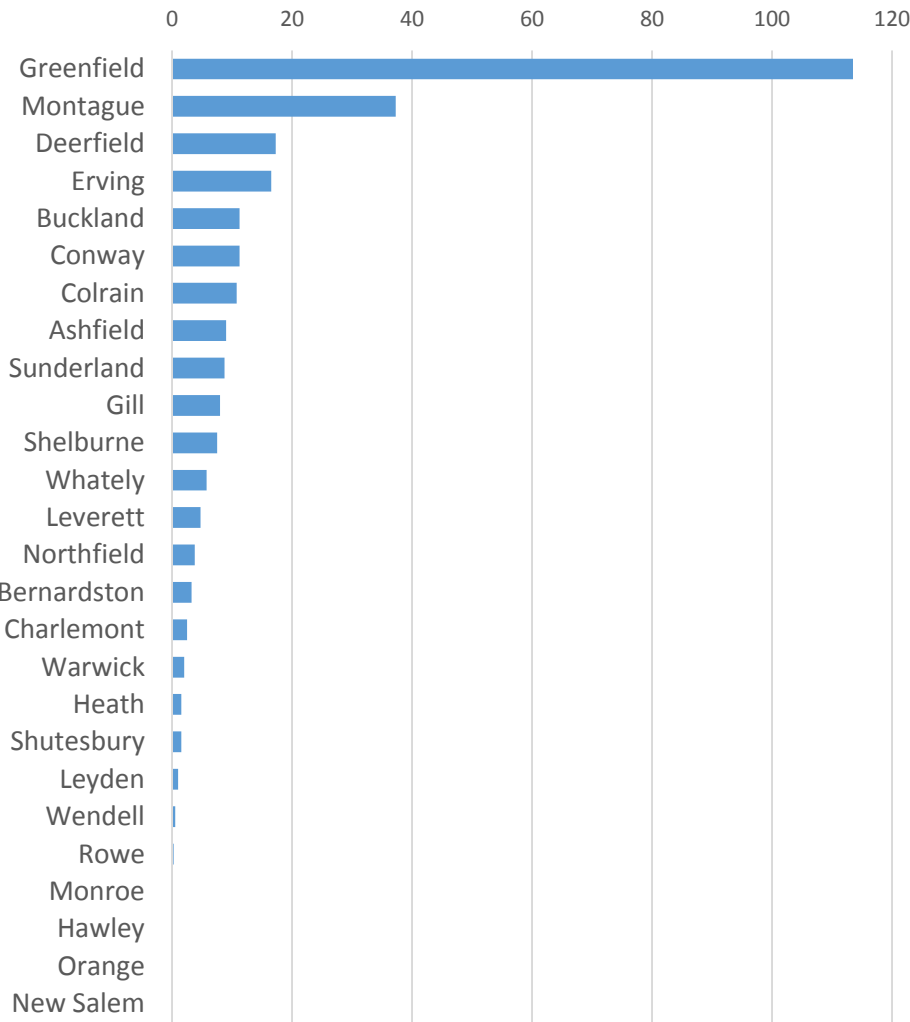


Students Sent to Charter Schools From Hampshire County in 2015

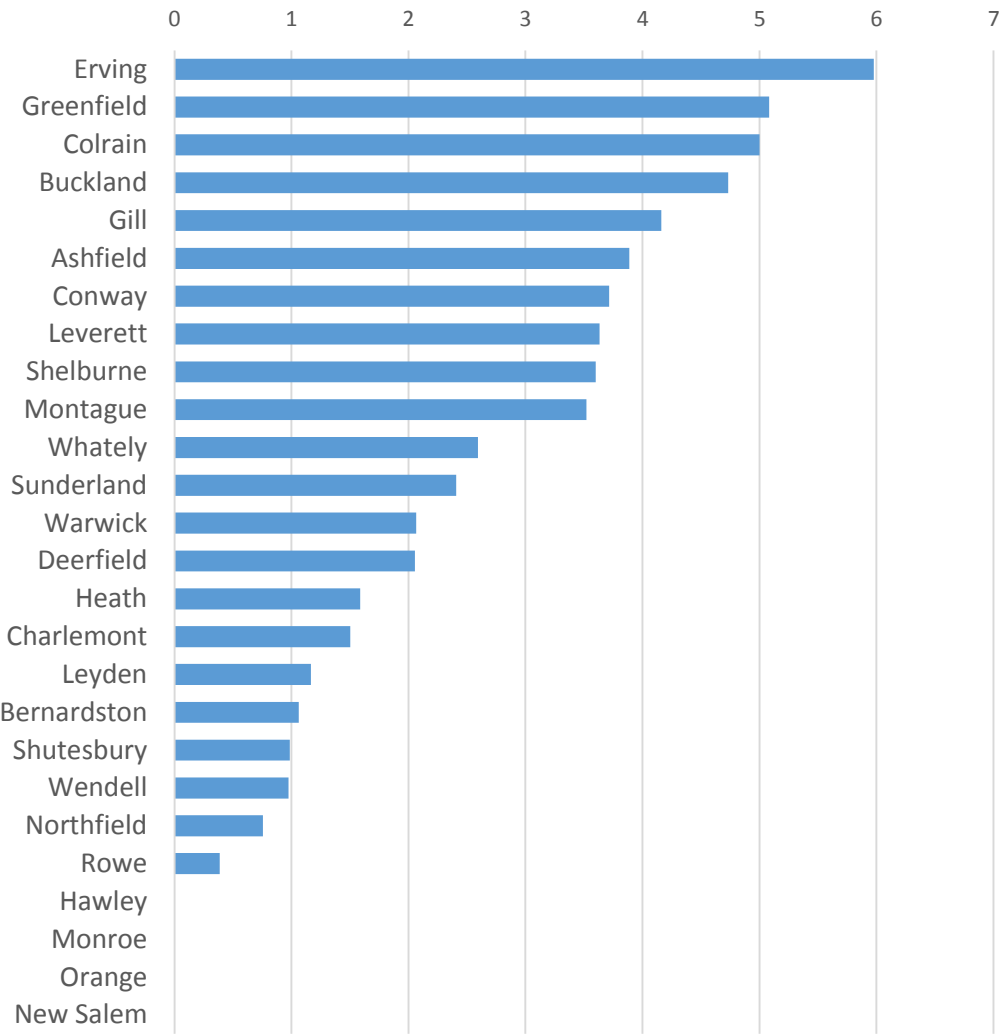


Franklin County Districts Sending Students to Charter Schools

Four-Year Average # Students Attending Charter Schools

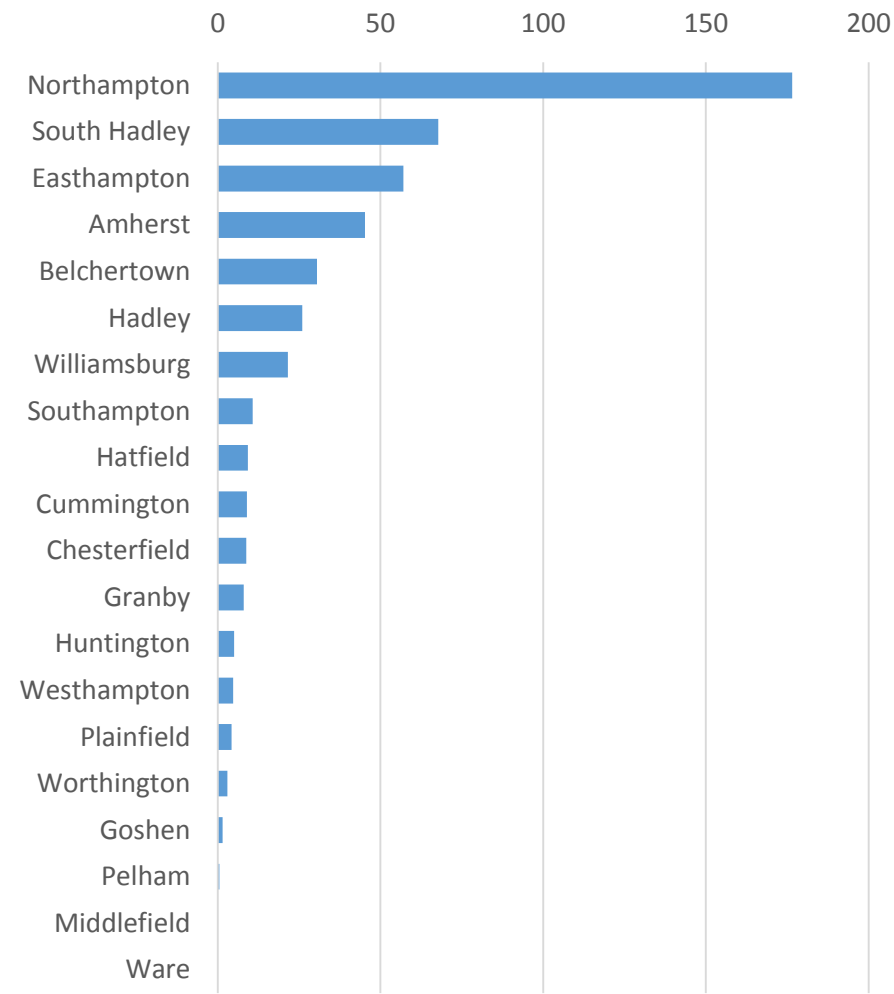


Four-Year Average % Students Attending Charter Schools

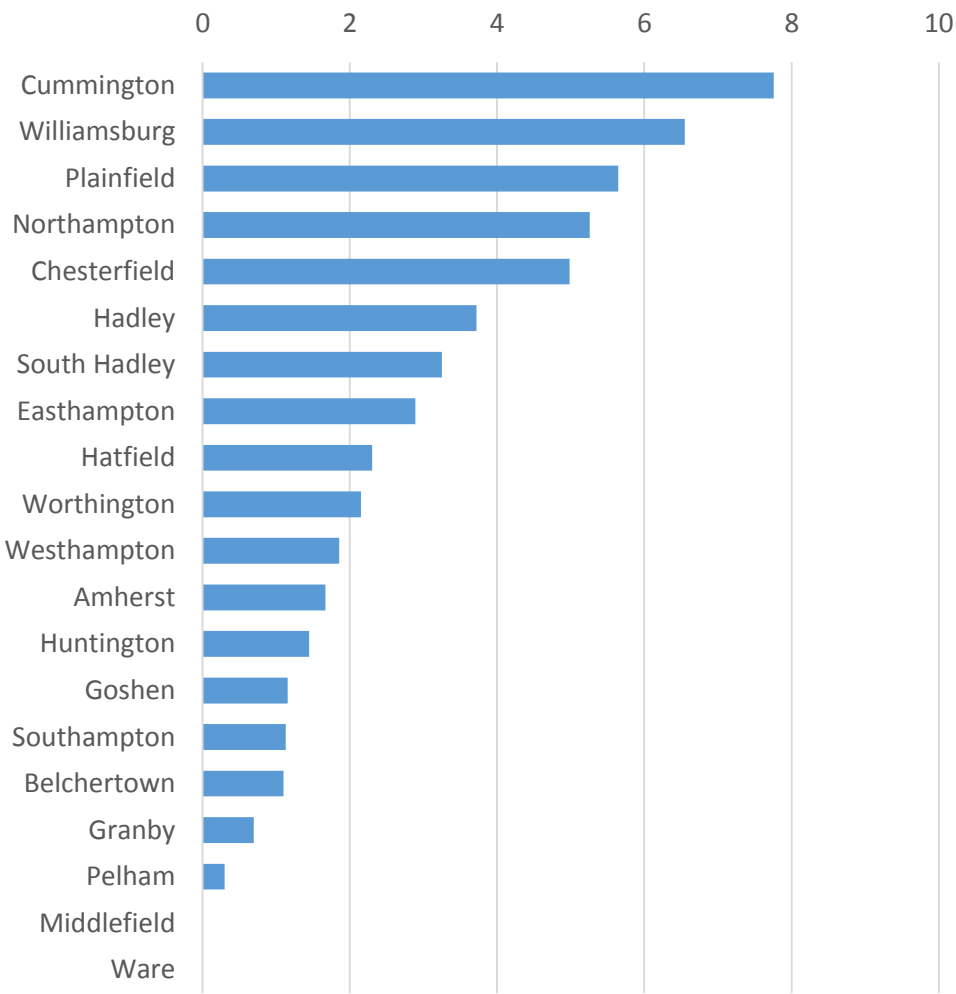


Hampshire County Districts Sending Students to Charter Schools

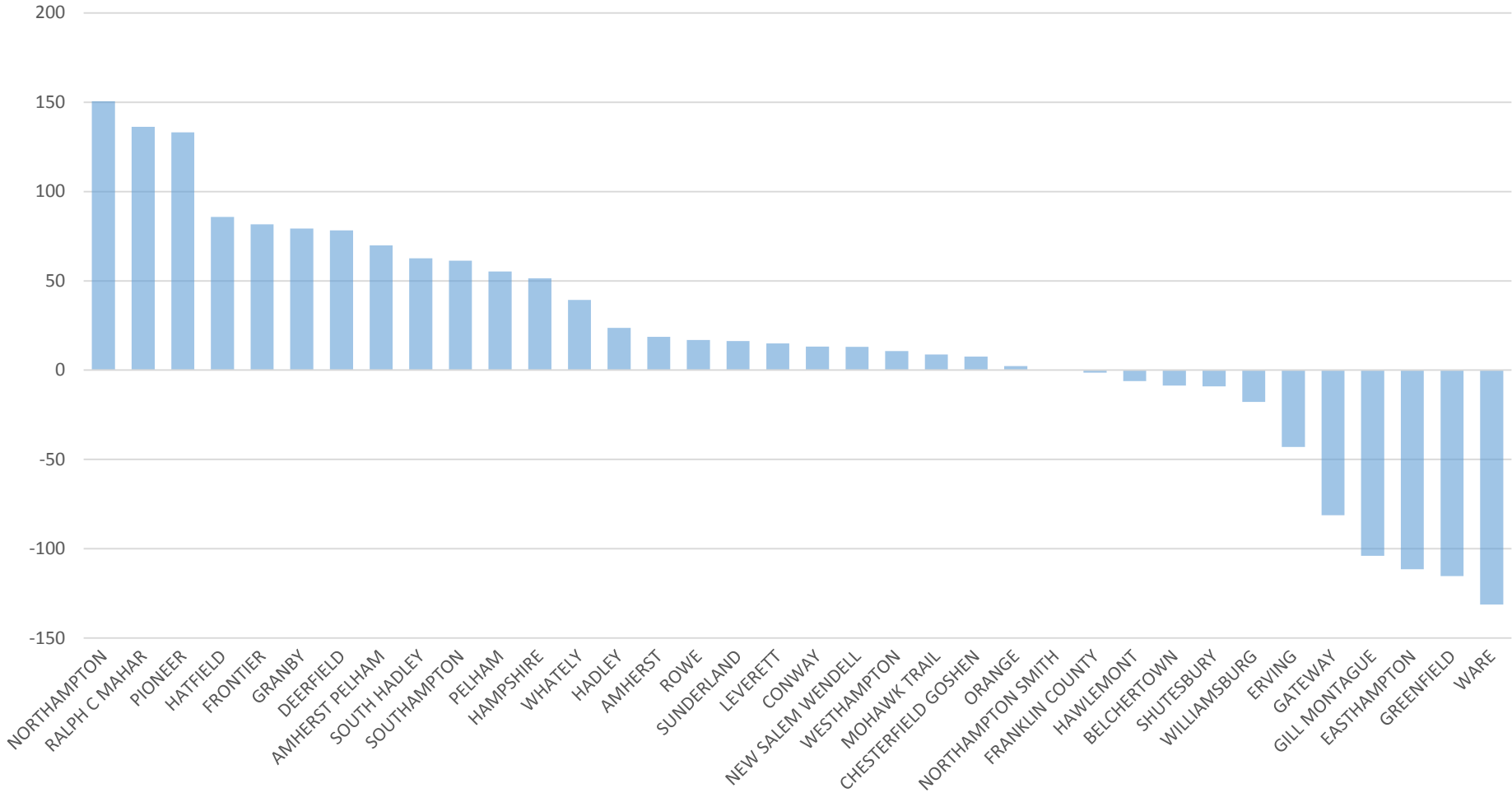
Four-Year Average # Students Attending Charter Schools



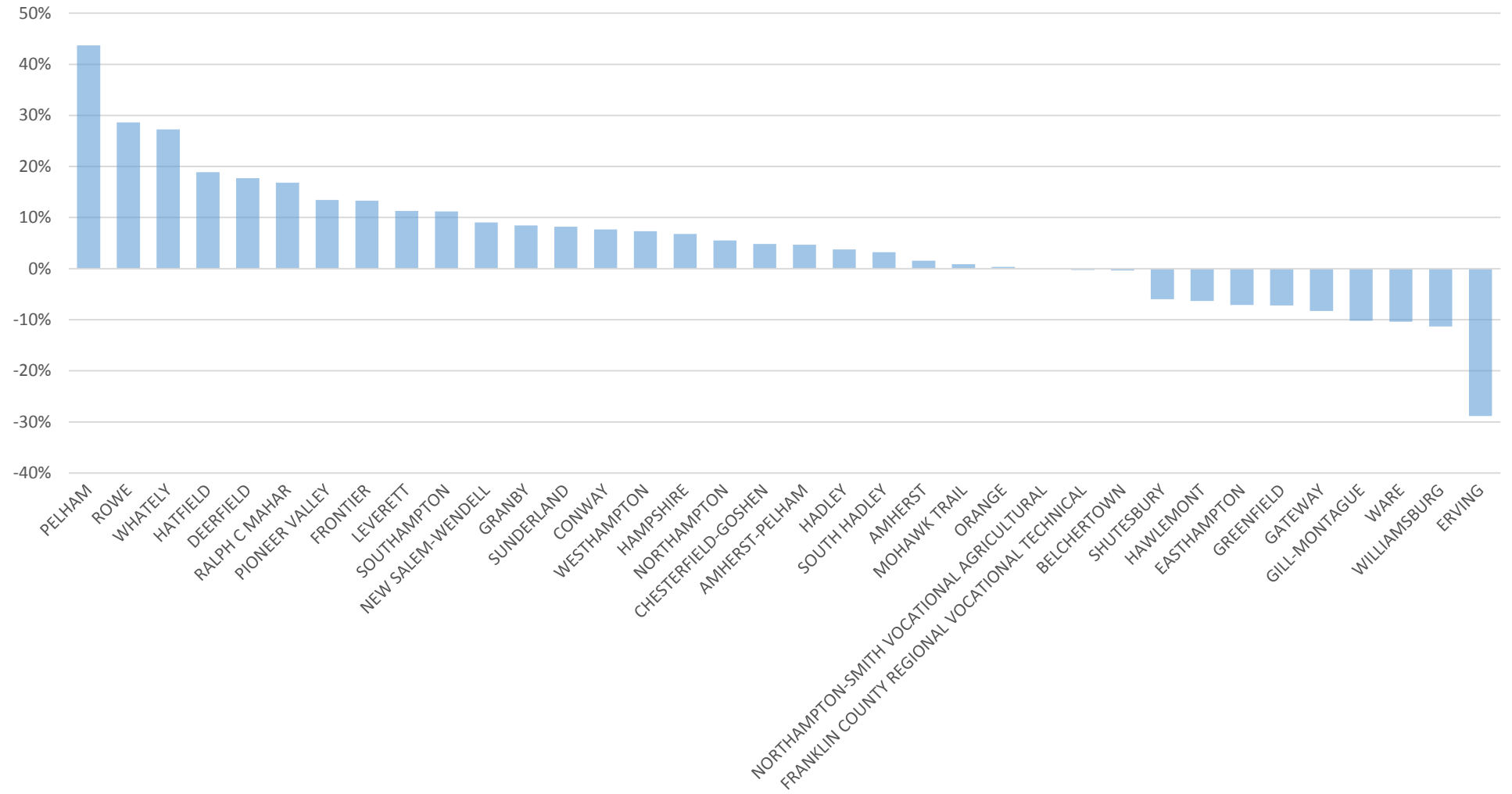
Four-Year Average % Students Attending Charter Schools



3-year average net choice FTEs



3-year average net choice relative to enrollment



county dropout rate

county	2014 enrollment	dropouts	rate
NORFOLK	30,306.00	250.00	0.82%
HAMPSHIRE	6,061.00	66.00	1.09%
MIDDLESEX	65,782.00	787.00	1.20%
DUKES	726.00	9.00	1.24%
NANTUCKET	450.00	6.00	1.33%
BARNSTABLE	7,906.00	113.00	1.43%
PLYMOUTH	23,566.00	375.00	1.59%
WORCESTER	38,046.00	635.00	1.67%
BERKSHIRE	5,419.00	106.00	1.96%
ESSEX	34,358.00	683.00	1.99%
BRISTOL	25,340.00	505.00	1.99%
FRANKLIN	2,856.00	72.00	2.52%
HAMPDEN	21,957.00	843.00	3.84%
SUFFOLK	21,991.00	1,219.00	5.54%